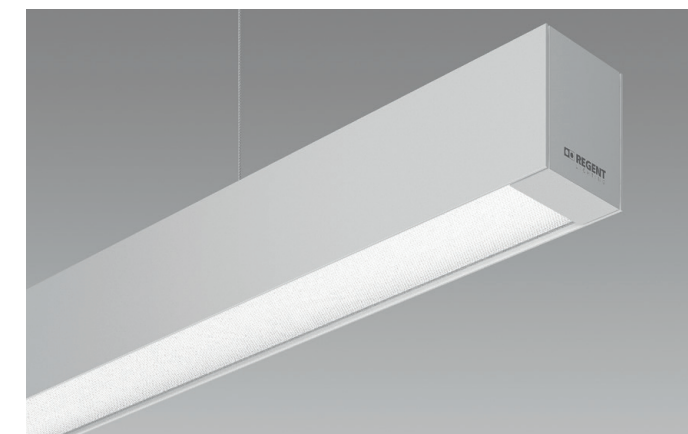


CHOICE OF OPTICS. WHATEVER YOUR REQUIREMENTS – THE RIGHT LIGHT.

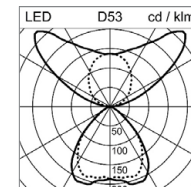
CHANNEL, THE CLASSIC AMONG ROW LIGHTING SYSTEMS, IS NOW AVAILABLE IN A MORE STREAMLINED VERSION FEATURING UNPRECEDENTED POWER. CHANNEL S UP PROVIDES DIRECT AND INDIRECT LIGHT FOR ANY OFFICE SPACE, BLENDS IN PERFECTLY WITH THE ARCHITECTURE AND SCORES HIGH WHEN IT COMES TO ENERGY EFFICIENCY, MEETING ALL STANDARDS THAT APPLY FOR WORKPLACE LIGHTING – WITHOUT COMPROMISE.



CHANNEL S UP C-LED

EXCEPTIONAL GLARE CONTROL

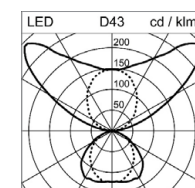
Direct light: 40 %
 Indirect light: 60 % (wide beam)
 3000 K, 4000 K, 2700–6500 K
 $UGR \leq 19$, $L_{max} \leq 3000 \text{ cd/m}^2$
 4500 lm/1,2 m
 100 lm/W



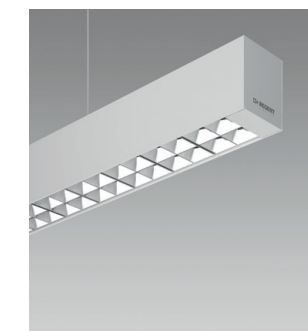
CHANNEL S UP LED



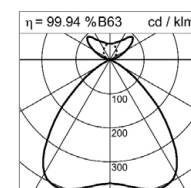
ESPECIALLY ATTRACTIVE
 opal cover



CHANNEL S UP BOOST LED



HIGHLY EFFICIENT
 with louvre

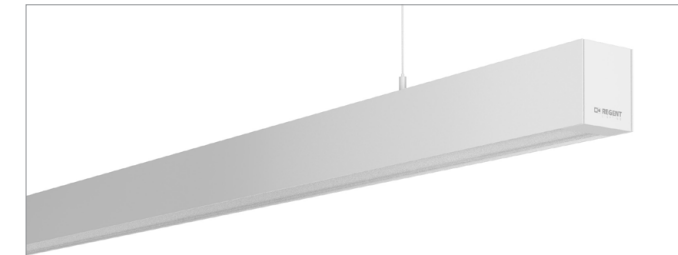


CHANNEL S UP PENDANT RANGE

INDIVIDUAL LUMINAIRE

COMPLETELY PRE-ASSEMBLED

Length
 1250 mm
 1550 mm
 2450 mm



SYSTEM LUMINAIRE

SUPPORT PROFILE

1 INITIAL/END SUPPORT PROFILE WITH PRE-INSTALLED INDIRECT LIGHT COMPONENT
 Power connection to be provided on initial profile
 2425 mm or 3625 mm

SUPPORT PROFILE FOR SINGLE MOUNTING WITH PRE-INSTALLED INDIRECT LIGHT COMPONENT
 Must be equipped with a batten or blind cover
 3650 mm

2 CENTRAL SUPPORT PROFILE WITH PRE-INSTALLED INDIRECT LIGHT COMPONENT
 2400 mm or 3600 mm

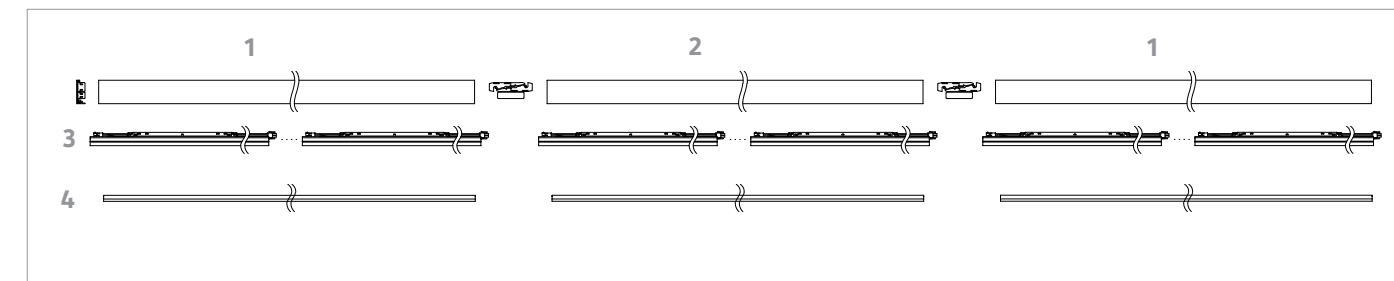
SYSTEM BATTEN

3 SYSTEM BATTEN FOR DIRECT LIGHTING
 1200 mm

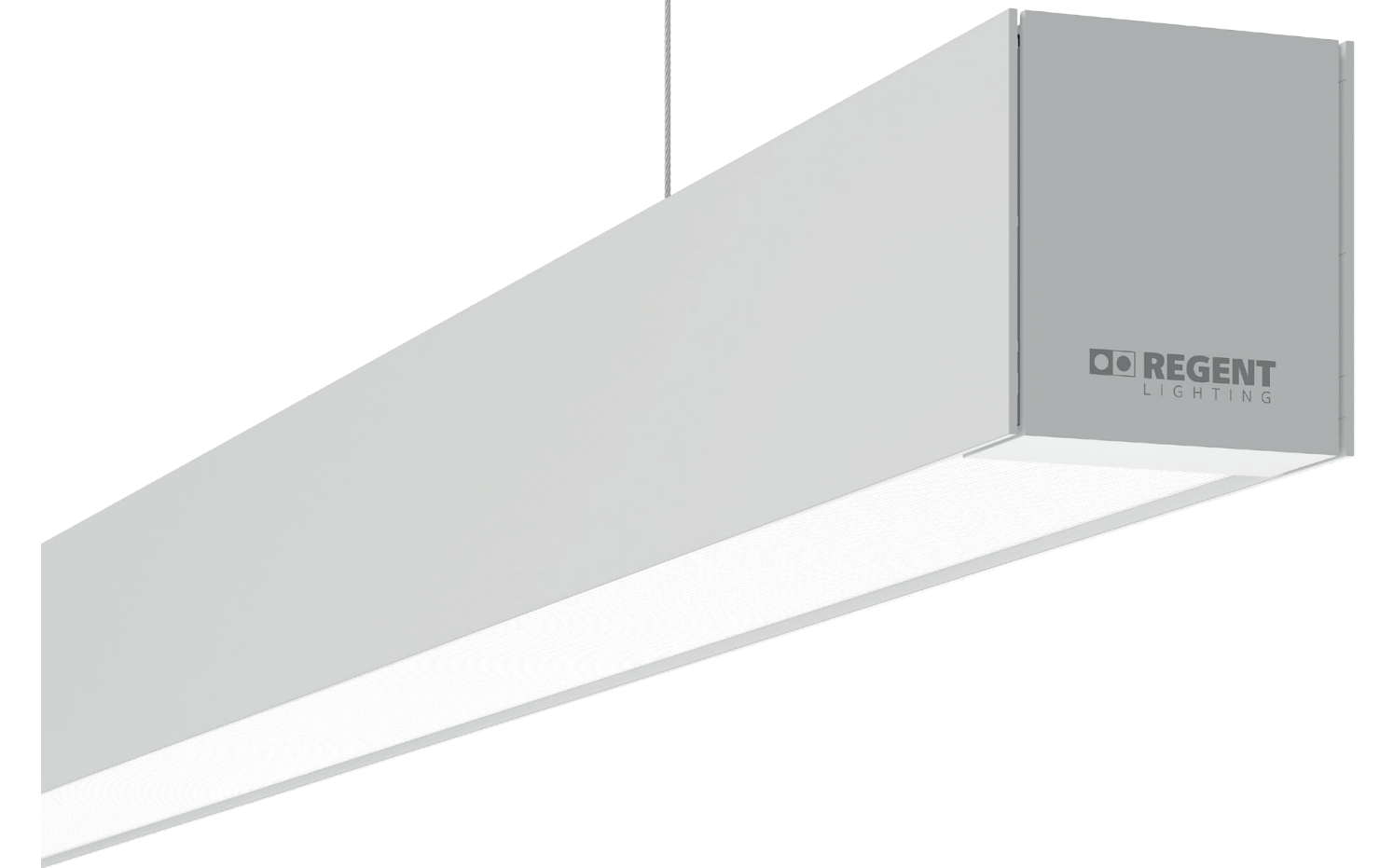
OPTICS

4 OPTICS FOR CHANNEL S UP C-LED AND CHANNEL S UP LED
 Length: 2408 mm or 3608 mm

OPTICS FOR CHANNEL S UP BOOST LED
 No additional optics necessary, louvres pre-installed on batten
 Mounting accessories to be ordered separately



For further information please visit www.regent.ch/channel-s-up



CHANNELS UP

A NEW GENERATION OF EXEMPLARY STREAMLINED LUMINAIRES.



CHANNEL S UP.

PERFECT SYMBIOSIS OF ERGONOMICS,
ELEGANCE AND EFFICIENCY.



SIMPLE TO INSTALL

- Individual luminaire pre-assembled (only two suspension points)
- Integrated through-wiring
- Suspension device can be positioned on the track as required
- Rectangular canopy (optional)

DESIGN

- Slimline design with a width of just 65 mm and a height of 71 mm
- Embedded end faces feature expansion compensation, guaranteeing an overall harmonious appearance
- Support profile and end faces made of aluminium, natural anodised
- No visible screws

VARIABLE

Available as an individual or system luminaire

DIREKT/INDIREKT

Three optical systems with different direct and indirect light components

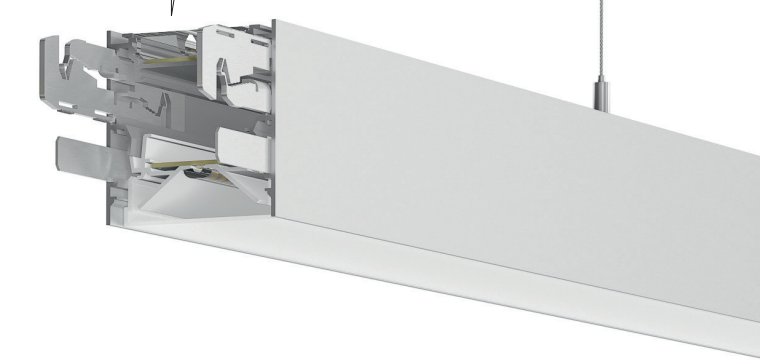
EFFICIENT

Efficient optics and high luminous flux reduce energy consumption and lower overall costs for the lighting system in the long run

Failure rate limited to an absolute minimum and extremely low maintenance costs thanks to long lifespan

SUITABLE FOR OFFICE ENVIRONMENTS

Microprismatic C-LED optics and Boost louvre optics guarantee UGR ≤ 19 , suitable for office environments; $L_{max} \geq 65^\circ \leq 3000 \text{ cd/m}^2$, in accordance with EN 12464-1



LIGHTING CHECKLIST

Choice of three optical systems for a wide variety of applications

Colour rendering: CRI ≥ 80

UGR ≤ 19

Colour temperatures: 4000 K, 3000 K, 2700–6500 K (depending on the version)

Maintained luminous flux: L80 50'000 h

Luminous efficacy: up to 120 lm/W

Glare control: UGR ≤ 19 , $L_{max} \leq 3000 \text{ cd/m}^2$

Suitable for emergency lighting

DALI

MOUNTING ACCESSORIES

Pendant suspension, canopy, profile connector set, wall retainer set, blind cover for use in the case of partial mounting, mains connection kit, end caps set