



## SLASH 2

With its purist aesthetics, SLASH 2 can be perfectly integrated into contemporary architecture. The uniform, slender lines and the reduced design without visible screws emphasise this incomparable elegance. The high-quality processed aluminium profile comes into its own especially with the pendant and surface-mounted versions, whereby SLASH 2 is also available as a recessed luminaire. Furthermore, the luminaire convinces with its energy efficiency and the pre-wired ICT® light strip, which can be individually replaced in case of maintenance. In any version, it is a timeless appearance and provides uniform, pure light of the highest quality.

### FEATURES

- Streamlined design makes for perfect integration into ceiling architecture
- Uniform lines of light
- No visible screws
- Pre-wired batten luminaire with ICT® (Instant Contact Technology)
- LED batten luminaire replaceable on site

### SPECIFICATIONS

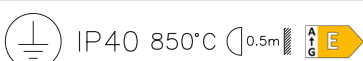
- Available as recessed ceiling and recessed wall luminaire, as ceiling and wall mounted luminaire, as channel lighting system and, with appropriate accessories, as pendant luminaire
- Direct light emission
- Luminaire profile made of aluminium natural anodised
- Cut-in contact clips, powder-coated white
- Electronic control integrated
- support profile and system components to be ordered separately
- Versions with emergency unit available
- ON/OFF + DALI

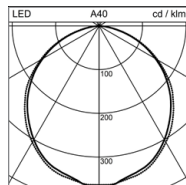
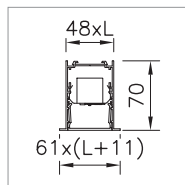
### TECHNICAL DATA

System power	7-25 W
Luminous flux of luminaire	510-2450 lm
Colour temperature	3000 K, 4000 K
Colour Rendering Index (CRI)	Ra >80
Maintained luminous flux	L80 50'000 h
Protection class	I
Ingress Protection	IP20
Photobiological safety	risk group 0, no risk

### APPLICATION AREAS

- Office & Education:** offices, reception rooms, counters
- Retail & Hospitality:** hotels, restaurants



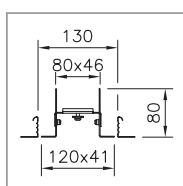
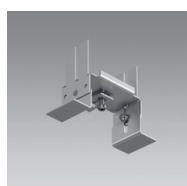


## RECESSED CEILING LUMINAIRE SLASH 2

Length	System power	Luminous flux of luminaire	Colour temperature	Light control	Notes	Ref. n°
602 mm	7 W	510 lm	3000 K	ON/OFF	xHE	2006.3943
602 mm	7 W	510 lm	3000 K	DALI	xHE	2006.3944
602 mm	7 W	530 lm	4000 K	ON/OFF	xHE	2006.3945
602 mm	7 W	530 lm	4000 K	DALI	xHE	2006.3946
602 mm	8.5 W	680 lm	3000 K	ON/OFF	HE	2006.3947
602 mm	8.5 W	680 lm	3000 K	DALI	HE	2006.3948
602 mm	8.5 W	710 lm	4000 K	ON/OFF	HE	2006.3949
602 mm	8.5 W	710 lm	4000 K	DALI	HE	2006.3950
602 mm	11 W	930 lm	3000 K	ON/OFF	HPE	2006.3951
602 mm	11 W	930 lm	3000 K	DALI	HPE	2006.3952
602 mm	11 W	980 lm	4000 K	ON/OFF	HPE	2006.3953
602 mm	11 W	980 lm	4000 K	DALI	HPE	2006.3954
1187 mm	11 W	1000 lm	3000 K	ON/OFF	xHE	2006.3955
1187 mm	11 W	1000 lm	3000 K	DALI	xHE	2006.3956
1187 mm	11 W	1060 lm	4000 K	ON/OFF	xHE	2006.3957
1187 mm	11 W	1060 lm	4000 K	DALI	xHE	2006.3958
1187 mm	14 W	1340 lm	3000 K	ON/OFF	HE	2006.3959
1187 mm	14 W	1340 lm	3000 K	DALI	HE	2006.3960
1187 mm	14 W	1420 lm	4000 K	ON/OFF	HE	2006.3961
1187 mm	14 W	1420 lm	4000 K	DALI	HE	2006.3962
1187 mm	19 W	1840 lm	3000 K	ON/OFF	HPE	2006.3963
1187 mm	19 W	1840 lm	3000 K	DALI	HPE	2006.3964
1187 mm	19 W	1940 lm	4000 K	ON/OFF	HPE	2006.3965
1187 mm	19 W	1940 lm	4000 K	DALI	HPE	2006.3966
1187 mm	13 W	1000 lm	3000 K	DALI	xHE NOT 3ST	2006.3967
1187 mm	13 W	1060 lm	4000 K	DALI	xHE NOT 3ST	2006.3968
1187 mm	16 W	1340 lm	3000 K	DALI	HE NOT 3ST	2006.3969
1187 mm	16 W	1420 lm	4000 K	DALI	HE NOT 3ST	2006.3970
1187 mm	21 W	1840 lm	3000 K	DALI	HPE NOT 3ST	2006.3971
1187 mm	21 W	1940 lm	4000 K	DALI	HPE NOT 3ST	2006.3972
1486 mm	13 W	1260 lm	3000 K	ON/OFF	xHE	2006.3973
1486 mm	13 W	1260 lm	3000 K	DALI	xHE	2006.3974
1486 mm	13 W	1320 lm	4000 K	ON/OFF	xHE	2006.3975
1486 mm	13 W	1320 lm	4000 K	DALI	xHE	2006.3976
1486 mm	17 W	1680 lm	3000 K	ON/OFF	HE	2006.3977
1486 mm	17 W	1680 lm	3000 K	DALI	HE	2006.3978
1486 mm	17 W	1780 lm	4000 K	ON/OFF	HE	2006.3979
1486 mm	17 W	1780 lm	4000 K	DALI	HE	2006.3980
1486 mm	23 W	2300 lm	3000 K	ON/OFF	HPE	2006.3981

## RECESSED CEILING LUMINAIRE SLASH 2

Length	System power	Luminous flux of luminaire	Colour temperature	Light control	Notes	Ref. n°
1486 mm	23 W	2300 lm	3000 K	DALI	HPE	2006.3982
1486 mm	23 W	2450 lm	4000 K	ON/OFF	HPE	2006.3983
1486 mm	23 W	2450 lm	4000 K	DALI	HPE	2006.3984
1486 mm	15 W	1260 lm	3000 K	DALI	xHE NOT 3ST	2006.3985
1486 mm	15 W	1320 lm	4000 K	DALI	xHE NOT 3ST	2006.3986
1486 mm	19 W	1680 lm	3000 K	DALI	HE NOT 3ST	2006.3987
1486 mm	19 W	1780 lm	4000 K	DALI	HE NOT 3ST	2006.3988
1486 mm	25 W	2300 lm	3000 K	DALI	HPE NOT 3ST	2006.3989
1486 mm	25 W	2450 lm	4000 K	DALI	HPE NOT 3ST	2006.3990



## BRACKET KIT SLASH 2

for plaster ceilings, for support profiles with or without cover edge,  
 max. every 1.5 m

Notes	Ref. n°
	1005.9700