



CHANNEL S UP OFFICE

The pendant luminaire CHANNEL S UP creates a pleasant atmosphere in any room. Its elegant appearance and first-class lighting quality make it particularly appealing for offices and adjoining zones. With its indirect light component pleasantly illuminating the ceiling, it enhances workplace ergonomics enormously and offers new possibilities in lighting design. The extremely slender CHANNEL S UP is available with four different optics that allow the greatest scope in lighting planning. However, the luminaire does not only provide high-quality light, but also makes a noticeable contribution to people's well-being thanks to the integrated Tunable White technology. So slim yet packed with sophisticated technology. CHANNEL S UP unites versatility with standard-compliant workplace lighting in a perfect form.

FEATURES

"S" as in slim: aesthetic design, extremely compact dimensions, 65 x 71 mm

Channel S Up: continuous line of light of up to 24 m in length thanks to the rollable RUN diffuser, can be shortened on site

Channel S Up Office: maximum visual comfort thanks to glare control with the office-compatible diffuser RUN+ and a high indirect light component

Channel S Up Boost Office: glare control with office-compatible louvre optics, particularly efficient thanks to high direct light component

RUN+ and louvre optics Boost guarantee standard-compliant planning according to EN 12464-1

High luminous flux from 1500 lm to 3300 lm direct light component per metre, depending on product line

Shadow-free line of light and timeless design

Asymmetrical light distribution for standard-compliant blackboard lighting and aesthetic wall illumination

TECHNICAL DATA

Luminous flux of luminaire	up to 5100 lm/1,2 m
Colour temperature	3000 K, 4000 K, 2700–6500 K
Colour Rendering Index [CRI]	Ra ≥ 80
Maintained luminous flux	L80 50'000 h
Protection class	I
Ingress Protection	IP20
Photobiological safety	risk group 1, low risk
Colour consistency	SDCM 3

SPECIFICATIONS

Lengths: 1250 mm, 1550 mm, 2450 mm, [3650 mm using system components]

End faces feature expansion compensation, generating a visually seamless, flush-mounted diffuser effect

Lateral surfaces are perceived as seamless thanks to embedded end faces

Support profile and end faces made of aluminium, natural anodised

No visible screws

Colour temperatures: 3000 K, 4000 K, 2700–6500 K (except Channel S Up Boost)

Indirect light component from 20 % [Boost Office] to 65 % [Office]

Operating unit integrated

Dimmable digital DALI

Also available as a system

APPLICATION AREAS

Office & Education: open-plan offices, staff training facilities, conference rooms, libraries, classrooms

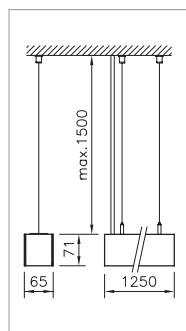
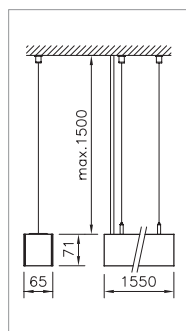
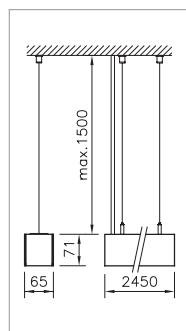
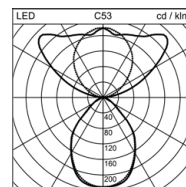
Retail & Hospitality: checkout areas, shopping malls

Industry: working areas



IP20 650°C 0.5m

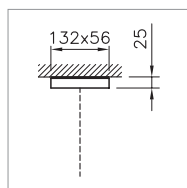
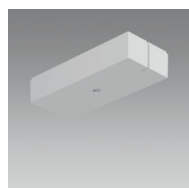



1

2

3


PENDANT LUMINAIRE CHANNEL S UP OFFICE

RUN+, bürotaugliche Optik, für eine perfekt entblendete und kontinuierliche Lichtlinie, UGR < 19, Lmax ≤ 3000 cd/m²

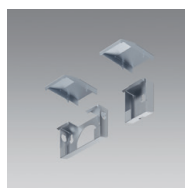
Length	System power	Luminous flux of luminaire	Colour temperature	Ref. n°
1250 mm	47 W	4500 lm	4000 K	1 2005.2629
1250 mm	47 W	4280 lm	3000 K	1 2005.2626
1250 mm	47 W	4500 lm	2700-6500 K	1 2005.2632
1550 mm	58 W	5630 lm	4000 K	2 2005.2630
1550 mm	58 W	5350 lm	3000 K	2 2005.2627
2450 mm	98 W	9640 lm	4000 K	3 2005.2631
2450 mm	98 W	9170 lm	3000 K	3 2005.2628



CANOPY KIT UNIVERSAL

for 1x wire cord suspension, white

Length	Ref. n°
132 mm	2001.8467



WALL RETAINER KIT CHANNEL S

2 pc. kit, recommended: at least every 1.5 m

Notes	Ref. n°
Feed-in set, consisting of two wall brackets and two laminations, wide wall bracket for feed-in	2004.6119
further wall brackets, set consisting of one wall bracket and one lamination	2004.6121



DISMANTLING TOOL PURELITE

Tool for removing the batten from the support profile

Notes	Ref. n°
	1022.8951