



## Level CLD

The Regent Level CLD LED free-standing luminaire is the most efficient of its kind – the answer to a wide range of modular office concepts. The guaranteed success of this luminaire stems from its clear, timeless formal language, optimised dimensions, and maximum efficiency thanks to innovative LED technology.

In addition, the Level CLD LED now features a new high lumen package with increased indirect light component tailored to meet all application requirements.

### FEATURES

Free-standing design luminaire with microprismatic optics, suitable for application in offices
Direct and indirect lighting: can be controlled together
High luminous efficacy of up to 149 lm/W
State-of-the-art presence detector and brightness sensor: SensoDimDigital®
UGR ≤ 16 especially suitable for demanding visual tasks (pursuant to SN EN 12464-1)
Die-cast aluminium housing
Homogeneous illumination
Minergie certified

### TECHNICAL DATA

System power	40 W, 59 W, 76 W, 99 W
Luminous flux of luminaire	5600 lm, 5900 lm, 7800 lm, 8200 lm, 10'800 lm, 11'300 lm, 13'700 lm, 14'500 lm
Colour temperature	3000 K, 4000 K
Colour Rendering Index (CRI)	Ra ≥ 80
Maintained luminous flux	L80 (B50) 50'000 h
Protection class	I
Ingress Protection	IP20
Photobiological safety	risk group 0, no risk

### SPECIFICATIONS

Choice of 2 luminaire heads
Direct-indirect light emission (21%/79%)
Height: 1900 mm
Housing colours: white, silver
Lighting control: SensoDimDigital®
Operating unit integrated
With or without control element
Also available as wall mounted luminaire and pendant luminaire
Luminaire head 350° adjustable

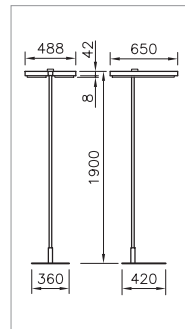
### APPLICATION AREAS

**Office & Education:** offices, open-plan offices, meeting rooms, reception rooms, staff training facilities, waiting rooms, libraries

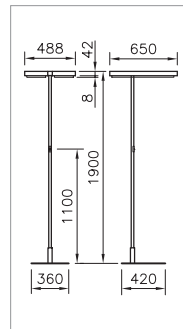


IP20 230V 650°C

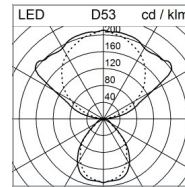




1

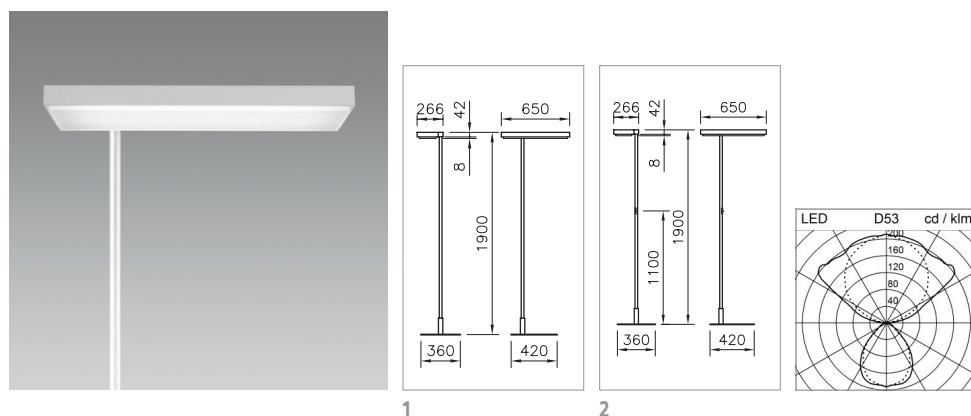


2



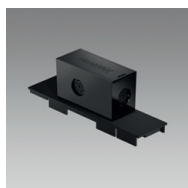
## FREESTANDING LUMINAIRE LEVEL CLD LED TWIN HEAD

System power	Luminous flux of luminaire	Colour temperature	Colour	Control element	Plug	Ref. n°
76 W	11'300 lm	4000 K	white	with control element	2 CH	2001.8928
76 W	11'300 lm	4000 K	white	with control element	2 EU	2001.8932
76 W	11'300 lm	4000 K	white	without control element	1 CH	2001.8936
76 W	11'300 lm	4000 K	white	without control element	1 EU	2001.8940
76 W	10'800 lm	3000 K	white	with control element	2 CH	2001.8927
76 W	10'800 lm	3000 K	white	with control element	2 EU	2001.8931
76 W	10'800 lm	3000 K	white	without control element	1 CH	2001.8935
76 W	10'800 lm	3000 K	white	without control element	1 EU	2001.8939
76 W	11'300 lm	4000 K	silver	with control element	2 CH	2001.8926
76 W	11'300 lm	4000 K	silver	with control element	2 EU	2001.8930
76 W	11'300 lm	4000 K	silver	without control element	1 CH	2001.8934
76 W	11'300 lm	4000 K	silver	without control element	1 EU	2001.8938
76 W	10'800 lm	3000 K	silver	with control element	2 CH	2001.8925
76 W	10'800 lm	3000 K	silver	with control element	2 EU	2001.8929
76 W	10'800 lm	3000 K	silver	without control element	1 CH	2001.8933
76 W	10'800 lm	3000 K	silver	without control element	1 EU	2001.8937
99 W	14'500 lm	4000 K	white	with control element	2 CH	2001.8944
99 W	14'500 lm	4000 K	white	with control element	2 EU	2001.8948
99 W	14'500 lm	4000 K	white	without control element	1 CH	2001.8952
99 W	14'500 lm	4000 K	white	without control element	1 EU	2001.8956
99 W	13'700 lm	3000 K	white	with control element	2 CH	2001.8943
99 W	13'700 lm	3000 K	white	with control element	2 EU	2001.8947
99 W	13'700 lm	3000 K	white	without control element	1 CH	2001.8951
99 W	13'700 lm	3000 K	white	without control element	1 EU	2001.8955
99 W	14'500 lm	4000 K	silver	with control element	2 CH	2001.8942
99 W	14'500 lm	4000 K	silver	with control element	2 EU	2001.8946
99 W	14'500 lm	4000 K	silver	without control element	1 CH	2001.8950
99 W	14'500 lm	4000 K	silver	without control element	1 EU	2001.8954
99 W	13'700 lm	3000 K	silver	with control element	2 CH	2001.8941
99 W	13'700 lm	3000 K	silver	with control element	2 EU	2001.8945
99 W	13'700 lm	3000 K	silver	without control element	1 CH	2001.8949
99 W	13'700 lm	3000 K	silver	without control element	1 EU	2001.8953



**FREESTANDING LUMINAIRE LEVEL CLD LED**  
 SINGLE HEAD LEFT

System power	Luminous flux of luminaire	Colour temperature	Colour	Control element	Plug	Ref. n°
40 W	5900 lm	4000 K	white	with control element	2 CH	2001.8960
40 W	5900 lm	4000 K	white	with control element	2 EU	2001.8964
40 W	5900 lm	4000 K	white	without control element	1 CH	2001.8968
40 W	5900 lm	4000 K	white	without control element	1 EU	2001.8972
40 W	5600 lm	3000 K	white	with control element	2 CH	2001.8959
40 W	5600 lm	3000 K	white	with control element	2 EU	2001.8963
40 W	5600 lm	3000 K	white	without control element	1 CH	2001.8967
40 W	5600 lm	3000 K	white	without control element	1 EU	2001.8971
40 W	5900 lm	4000 K	silver	with control element	2 CH	2001.8958
40 W	5900 lm	4000 K	silver	with control element	2 EU	2001.8962
40 W	5900 lm	4000 K	silver	without control element	1 CH	2001.8966
40 W	5900 lm	4000 K	silver	without control element	1 EU	2001.8970
40 W	5600 lm	3000 K	silver	with control element	2 CH	2001.8957
40 W	5600 lm	3000 K	silver	with control element	2 EU	2001.8961
40 W	5600 lm	3000 K	silver	without control element	1 CH	2001.8965
40 W	5600 lm	3000 K	silver	without control element	1 EU	2001.8969
59 W	8200 lm	4000 K	white	with control element	2 CH	2001.8976
59 W	8200 lm	4000 K	white	with control element	2 EU	2001.8980
59 W	8200 lm	4000 K	white	without control element	1 CH	2001.8984
59 W	8200 lm	4000 K	white	without control element	1 EU	2001.8988
59 W	7800 lm	3000 K	white	with control element	2 CH	2001.8975
59 W	7800 lm	3000 K	white	with control element	2 EU	2001.8979
59 W	7800 lm	3000 K	white	without control element	1 CH	2001.8983
59 W	7800 lm	3000 K	white	without control element	1 EU	2001.8987
59 W	8200 lm	4000 K	silver	with control element	2 CH	2001.8974
59 W	8200 lm	4000 K	silver	with control element	2 EU	2001.8978
59 W	8200 lm	4000 K	silver	without control element	1 CH	2001.8982
59 W	8200 lm	4000 K	silver	without control element	1 EU	2001.8986
59 W	7800 lm	3000 K	silver	with control element	2 CH	2001.8973
59 W	7800 lm	3000 K	silver	with control element	2 EU	2001.8977
59 W	7800 lm	3000 K	silver	without control element	1 CH	2001.8981
59 W	7800 lm	3000 K	silver	without control element	1 EU	2001.8985

**COMMUNICATION MODULE ALONEATWORK FOR LEVEL CLD LED**

---

Notes	Ref. n°
	2002.5778