



## SLASH 2

With its purist aesthetics, SLASH 2 can be perfectly integrated into contemporary architecture. The uniform, slender lines and the reduced design without visible screws emphasise this incomparable elegance. The high-quality processed aluminium profile comes into its own especially with the pendant and surface-mounted versions, whereby SLASH 2 is also available as a recessed luminaire. Furthermore, the luminaire convinces with its energy efficiency and the pre-wired ICT® light strip, which can be individually replaced in case of maintenance. In any version, it is a timeless appearance and provides uniform, pure light of the highest quality.

### FEATURES

Streamlined design makes for perfect integration into ceiling architecture
Uniform lines of light
No visible screws
Pre-wired batten luminaire with ICT® (Instant Contact Technology)
LED batten luminaire replaceable on site

### SPECIFICATIONS

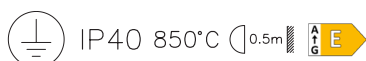
Available as recessed ceiling and recessed wall luminaire, as ceiling and wall mounted luminaire, as channel lighting system and, with appropriate accessories, as pendant luminaire
Direct light emission
Luminaire profile made of aluminium natural anodised
Cut-in contact clips, powder-coated white
Electronic control integrated
support profile and system components to be ordered separately
Versions with emergency unit available
ON/OFF + DALI

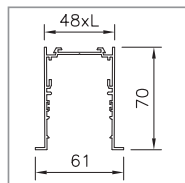
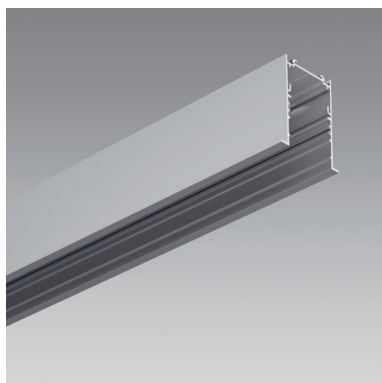
### TECHNICAL DATA

System power	7-25 W
Luminous flux of luminaire	510-2450 lm
Colour temperature	3000 K, 4000 K
Colour Rendering Index (CRI)	Ra >80
Maintained luminous flux	L80 50'000 h
Protection class	I
Ingress Protection	IP20
Photobiological safety	risk group 0, no risk

### APPLICATION AREAS

<b>Office &amp; Education:</b> offices, reception rooms, counters
<b>Retail &amp; Hospitality:</b> hotels, restaurants



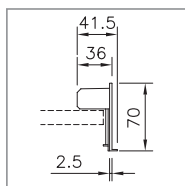
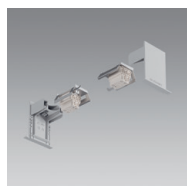


### SUPPORT PROFILE SLASH 2

RECESSED MOUNTING, WITH CEILING TRIM

Made of aluminium, natural anodised, pre-perforated

Length	Ref. n°
2363 mm	2008.0738
2950 mm	2006.3524
3535 mm	2008.0744
4420 mm	2006.3526

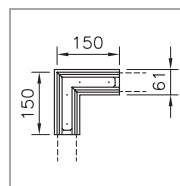
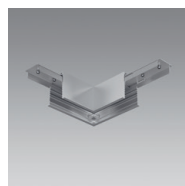


### KIT OF END FACES

LEFT/RIGHT, FOR RECESSED MOUNTING, WITH CEILING TRIM

no visible screws, in synthetic material, thickness = 2.5 mm, plan with 2 x 2 mm empty profile

Notes	Ref. n°
2 x end parts and 2 x clamp bracket set	2006.5852

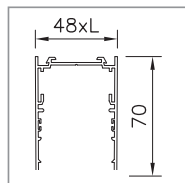
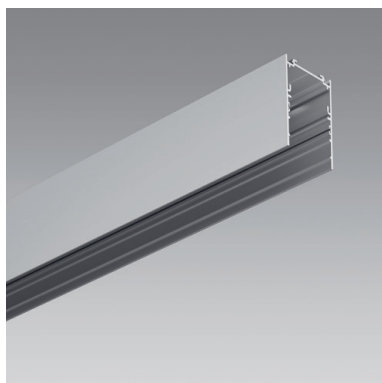


### CORNER CONNECTOR

WITH CEILING TRIM, 90°

horizontal, incl. 2 profile connectors, made of aluminium, natural anodised, pre-perforated

Length	Ref. n°
150 mm	2006.5366

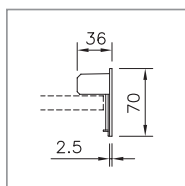
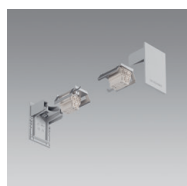


### SUPPORT PROFILE SLASH 2

RECESSED MOUNTING, AND SURFACE MOUNTING, WITHOUT CEILING TRIM

Made of aluminium, natural anodised, pre-perforated

Length	Ref. n°
2363 mm	2008.0730
2950 mm	2006.2511
3535 mm	2008.0732
4420 mm	2006.2515

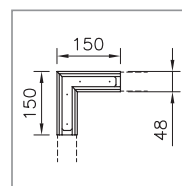
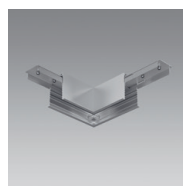


### KIT OF END FACES

LEFT/RIGHT, FOR RECESSED MOUNTING, AND SURFACE MOUNTING WITHOUT CEILING TRIM

no visible screws, in synthetic material, thickness = 2.5 mm, plan with 2 x 2 mm empty profile

Notes	Ref. n°
2 x end parts and 2 x clamp bracket set	2006.5837



### CORNER CONNECTOR

WITHOUT CEILING TRIM, 90°

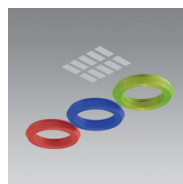
horizontal, incl. 2 profile connectors, made of aluminium, natural anodised

Length	Ref. n°
150 mm	2006.5364



### PROFILE CONNECTOR SLASH 2

Notes	Ref. n°
	1003.0920



### THROUGH-WIRING

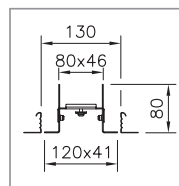
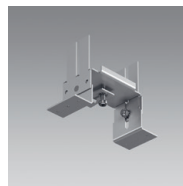
Ø 1.5 mm<sup>2</sup>, Length = 100 m

Notes	Ref. n°
3 poles	1002.9646
5 poles	1002.9648


**WIRE RETAINER KIT**

approx every 1 m

Notes	Ref. n°
10 pieces	1003.0373


**BRACKET KIT SLASH 2**

for plaster ceilings, for support profiles with or without cover edge, max. every 1.5 m

Notes	Ref. n°
	1005.9700


**WIRE CORD SUSPENSION**

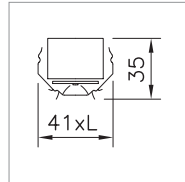
Load max. max. 20 kg, recommended: all 1.5 m

Notes	Ref. n°
2 pc. kit with cable clamp	1005.9698
1 piece	1000.5435


**CABLE KIT**

Length = 2000 mm, transparent, for max. 1.5 m suspension

Notes	Ref. n°
3 poles	1008.1448
5 poles	1008.1450

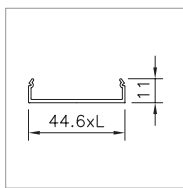


## BATTEN LUMINAIRE SLASH 2

WITH RAPID CONNECTION ICT-INSTANT CONTACT TECHNOLOGY

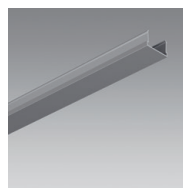
Batten luminaires of the same type provide the same impression of brightness regardless of their length. Therefore, only batten luminaires of the same type should be applied together in one system, i.e. only HE or only HPE. Slave without control gear, must be connected to master, xHE = 1320 lm and 13 W per 1,5 m; HE = 1780 lm and 17 W per 1,2 m; HPE = 2450 lm and 23 W per 1,2 m at 4000K

Colour temperature	Notes	Length	Master/Slave	Ref. n°
3000 K	HPE: non-renewable, in 2 parts, with ICT	2938 mm		2006.4011
4000 K	xHE: non-renewable, in 2 parts, with ICT	2938 mm		2006.4013
3000 K	HE: non-renewable, in 2 parts, with ICT	2938 mm		2006.4015
4000 K	HE: non-renewable, in 2 parts, with ICT	2938 mm		2006.4017
3000 K	HPE: non-renewable, in 2 parts, with ICT	2938 mm		2006.4019
4000 K	HPE: non-renewable, in 2 parts, with ICT	2938 mm		2006.4021
3000 K	xHE: Master, renewable from 0 mm to 1500 mm, with ICT	1468 mm	Master	2006.3992
4000 K	xHE: Master, renewable from 0 mm to 1500 mm, with ICT	1468 mm	Master	2006.3994
3000 K	HE: Master, renewable from 0 mm to 1500 mm, with ICT	1468 mm	Master	2006.3996
4000 K	HE: Master, renewable from 0 mm to 1500 mm, with ICT	1468 mm	Master	2006.3998
3000 K	HPE: Master, renewable from 0 mm to 1500 mm, with ICT	1468 mm	Master	2006.4000
4000 K	HPE: Master, renewable from 0 mm to 1500 mm, with ICT	1468 mm	Master	2006.4002
3000 K	xHE: Master, renewable from 0 mm to 1500 mm, with ICT	1468 mm	Master / Not 3h	2006.4003
4000 K	xHE: Master, renewable from 0 mm to 1500 mm, with ICT	1468 mm	Master / Not 3h	2006.4004
3000 K	HE: Master, renewable from 0 mm to 1500 mm, with ICT	1468 mm	Master / Not 3h	2006.4005
4000 K	HE: Master, renewable from 0 mm to 1500 mm, with ICT	1468 mm	Master / Not 3h	2006.4006
3000 K	HPE: Master, renewable from 0 mm to 1500 mm, with ICT	1468 mm	Master / Not 3h	2006.4007
4000 K	HPE: Master, renewable from 0 mm to 1500 mm, with ICT	1468 mm	Master / Not 3h	2006.4008
3000 K	Luminous flux of luminaire as Master	585 mm	Slave multiple use	2006.4024
4000 K	Luminous flux of luminaire as Master	585 mm	Slave multiple use	2006.4025
3000 K	Luminous flux of luminaire as Master	300 mm	Slave End	2006.4022
4000 K	Luminous flux of luminaire as Master	300 mm	Slave End	2006.4023



#### DIFFUSOR

Length	Ref. n°
2357 mm	2008.0782
2943 mm	2006.3538
3527 mm	2008.0784
4412 mm	2006.3540



#### COVER PROFILE

Alu natural anodised

Length	Ref. n°
2500 mm	1003.0370



#### CUT-IN CONTACT CLIPS KIT ICT 2

Notes	Ref. n°
25 pieces, for 1.5 mm <sup>2</sup>	1002.4962
50 pieces, for 1.5 mm <sup>2</sup>	1002.4963