



CHANNEL S

CHANNEL S creates a pleasant atmosphere in any room. Its elegant appearance and first-class lighting quality make it particularly appealing for offices and adjoining zones. The extremely slender CHANNEL S is available in a wide variety of versions, with four different optics and several mounting options that allow the greatest scope in lighting planning. However, the luminaire does not only provide high-quality light and planning precision, but also makes a noticeable contribution to people's well-being thanks to the integrated Tunable White technology. So slim yet packed with sophisticated technology. CHANNEL S unites versatility with standard-compliant workplace lighting in a perfect form.

FEATURES

"S" as in slim, aesthetic design in extremely compact dimensions of 65 x 60 mm

Available with integrated RUN Diffuser or office-compatible RUN+ Diffuser for continuous, seamless lines of light allowing precise planning up to 24 m length

Channel S Boost Office: very aesthetic louvre optics optimized for LED, particularly efficient, planning according to EN 12464-1, up to 3600 lm / 1,2 m

Economical overall solution featuring maximum ergonomics for the user

Visually perfect transition from profile to diffuser without gasket

Asymmetrical light distribution for standard-compliant blackboard lighting and wall illumination

TECHNICAL DATA

Luminous flux of luminaire	720 lm-4100 lm
Colour temperature	3000 K, 4000 K, 2700 K-6500 K
Colour Rendering Index [CRI]	Ra >80
Maintained luminous flux	L80 [B10] 50'000 h
Glare value	Up to UGR < 19
Protection class	I
Ingress Protection	IP20, optional IP40 up to IP54
Photobiological safety	Risk group 0, no risk

SPECIFICATIONS

100% direct light emission

End faces feature expansion compensation, generating a visually seamless, flush-mounted diffuser effect

Support profile and ends (visible part) in natural anodised aluminium

No visible screws

Colour temperature can be adjusted individually with the Tunable White technology

LED batten luminaire replaceable on site

Dimmable digital DALI

Operating unit integrated

Also available ceiling and wall mounted luminaires as well as system without cover frame

APPLICATION AREAS

Office & Education: offices, open-plan offices, staff training facilities, conference rooms, libraries, classrooms, circulation zones

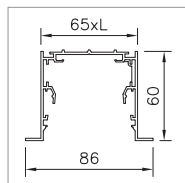
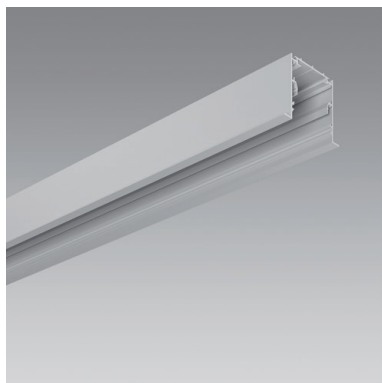
Industry: working areas

Retail & Hospitality: checkout areas, shopping malls



IP20 230V

CHANNEL S

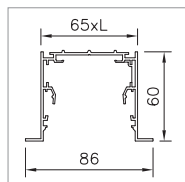
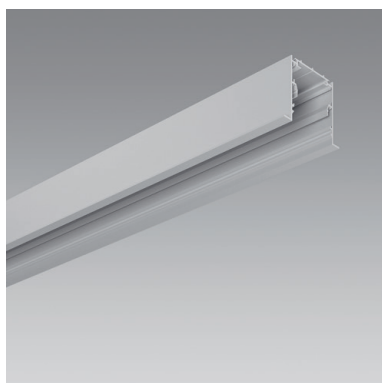


SUPPORT PROFILE FOR CHANNEL LIGHTING SYSTEM CHANNEL S

RECESSED MOUNTING, SMALLEST SYSTEM, WITH CEILING TRIM

In aluminium, pre-perforated

Length	Ref. n°
2444 mm	2002.8687
3044 mm	2002.8688
4544 mm	2002.8689

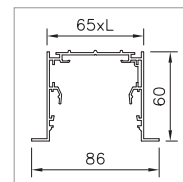
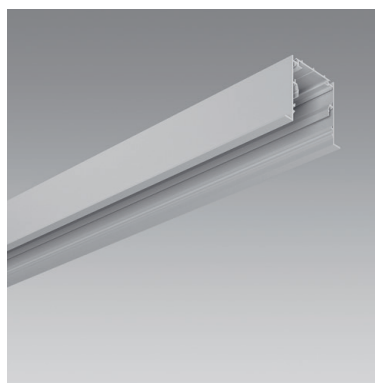


SUPPORT PROFILE FOR CHANNEL LIGHTING SYSTEM CHANNEL S

RECESSED MOUNTING, INITIAL/END MODULE, WITH CEILING TRIM

Required length: 3 mm more than the length of the profile, pre-perforated

Length	Ref. n°
2422 mm	2002.8690
3022 mm	2002.8691
4522 mm	2002.8692

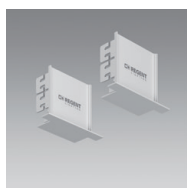


SUPPORT PROFILE FOR CHANNEL LIGHTING SYSTEM CHANNEL S

RECESSED MOUNTING, CENTRE, WITH CEILING TRIM

Required length: 3 mm more than the length of the profile, pre-perforated

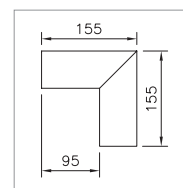
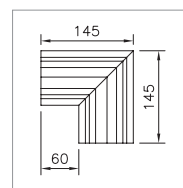
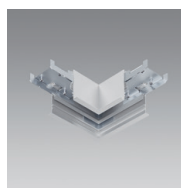
Length	Ref. n°
2400 mm	2002.8693
3000 mm	2002.8694
4500 mm	2002.8695



KIT OF END FACES CHANNEL S

left/right, aluminium (visible part), no visible screws, can be inserted into place, thickness = 3.5 mm

Notes	Ref. n°
IP 20, 2 pieces	2003.2622
IP 54, 2 pieces	2004.7094



1

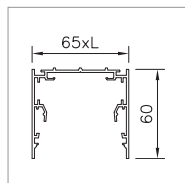
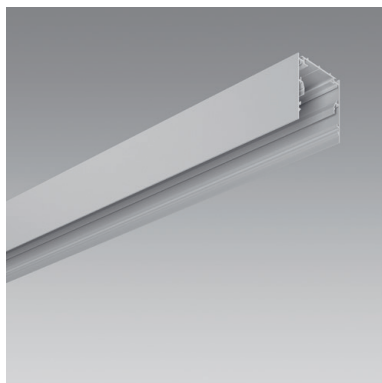
2

CORNER CONNECTOR CHANNEL S

Recessed mounting with ceiling trim, vertical or horizontal, made of aluminium, natural-colour anodised, incl. 2 profile connectors

Notes	Ref. n°
horizontal, wall/wall	1 2004.7100
vertical, ceiling/wall	2 2004.7101

CHANNEL S

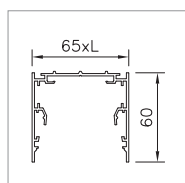


SUPPORT PROFILE FOR CHANNEL LIGHTING SYSTEM CHANNEL S

SURFACE MOUNTING, SMALLEST SYSTEM, WITHOUT CEILING TRIM

in aluminium, pre-perforated

Length	Ref. n°
2444 mm	2002.8700
3044 mm	2002.8701
4544 mm	2002.8702

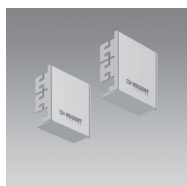


SUPPORT PROFILE FOR CHANNEL LIGHTING SYSTEM CHANNEL S

SURFACE MOUNTING, INITIAL/END MODULE, WITHOUT CEILING TRIM

Required length: 3 mm more than the length of the profile, pre-perforated

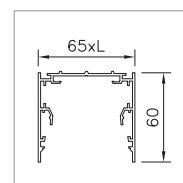
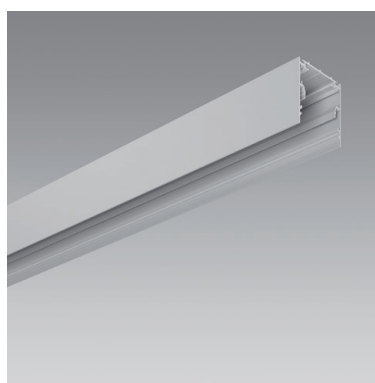
Length	Ref. n°
2422 mm	2002.8703
3022 mm	2002.8704
4522 mm	2002.8705



KIT OF END FACES CHANNEL S

left/right, aluminium (visible part), no visible screws, can be inserted into place, thickness = 3.5 mm

Notes	Ref. n°
IP 20, 2 pieces	2003.2611
IP 54, 2 pieces	2004.7093

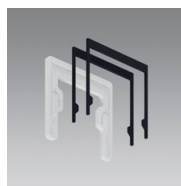


SUPPORT PROFILE FOR CHANNEL LIGHTING SYSTEM CHANNEL S

SURFACE MOUNTING, CENTRE, WITHOUT CEILING TRIM

Required length: 3 mm more than the length of the profile, pre-perforated

Length	Ref. n°
2400 mm	2002.8706
3000 mm	2002.8707
4500 mm	2002.8708

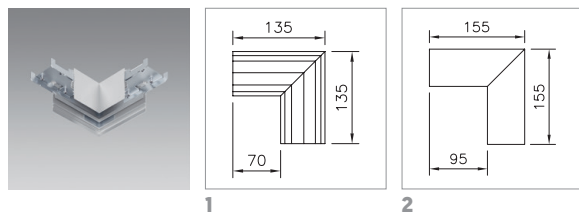


GASKET KIT CHANNEL S

Kit consisting of 2 pieces and an assembly jig, for support profile, IP54 in combination with diffusers RUN and IP54 with front side

Notes	Ref. n°
	2006.3748

CHANNEL S



CORNER CONNECTOR CHANNEL S

Recessed mounting with ceiling trim, vertical or horizontal, made of aluminium, natural-colour anodised, incl. 2 profile connectors

Notes	Ref. n°
horizontal, wall/wall	1 2004.7098
vertical, ceiling/wall	2 2004.7099



MAINS CONNECTION KIT CHANNEL S

connecting piece, incl. 4 cable supports

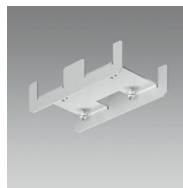
Notes	Ref. n°
initial/end module, 5 poles	2003.4754
centre, 5 poles	2003.4755



CABLE SUPPORT KIT CHANNEL S

in polycarbonate [PC], 12 pieces, recommended: every 1,0 m

Notes	Ref. n°
initial/end module	2003.4924



PROFILE CONNECTOR KIT CHANNEL S

for support profile, do not place the control gear above profile connectors

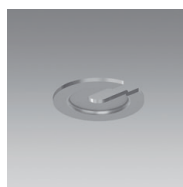
Notes	Ref. n°
	2003.6972



MOUNTING KIT CHANNEL S

for the mounting of support profiles with or without trim, for 1–30 mm false ceilings, recommended: every 1,5 m

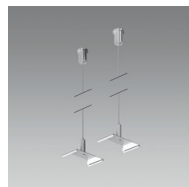
Notes	Ref. n°
	2003.1609



SPLINT WASHER KIT

Splint washer kit in steel, promatised, for mounting of the support profile

Notes	Ref. n°
2 pieces	2004.0587
5 pieces	2004.0588



WIRE CORD SUSPENSION KIT CHANNEL S

2 pc. kit, recommended: at least every 1.5 m

Length	Ref. n°
1500 mm	2001.0619
3000 mm	2001.0618



MOUNTING SPRING CHANNEL S

in spring steel, to facilitate mounting the support profile on the ceiling, to compensate for uneven surfaces, as a placeholder for cable routing, recommended: every 1,5 m

Notes	Ref. n°
	2003.5473

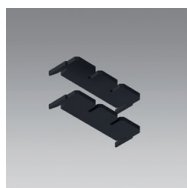
CHANNEL S



CANOPY KIT UNIVERSAL

white, for wire cord suspension and connection cable

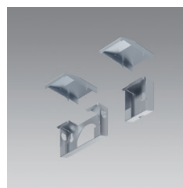
Notes	Ref. n°
	2001.8467



GASKET KIT CHANNL S IP40

IP40 in combination with diffuser RUN and RUN+ in one piece for single luminaire and system

Notes	Ref. n°
	2004.6603



WALL RETAINER KIT CHANNEL S

2 pc. kit, recommended: at least every 1.5 m

Notes	Ref. n°
Feed-in set, consisting of two wall brackets and two laminations, wide wall bracket for feed-in	2004.6119
further wall brackets, set consisting of one wall bracket and one lamination	2004.6121

CHANNEL S



BATTEN LUMINAIRE CHANNEL S

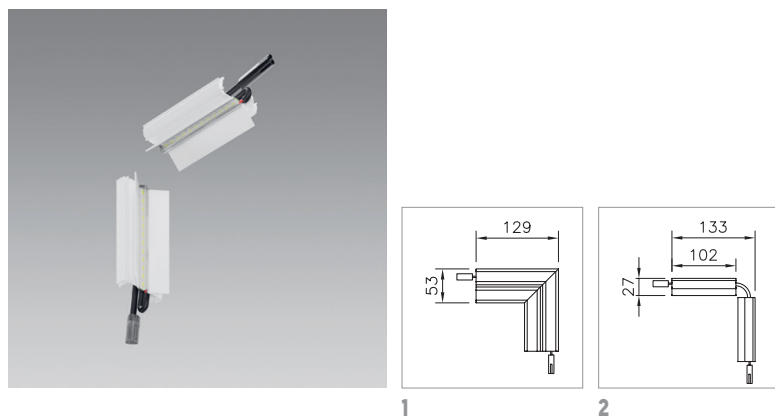
for RUN Diffuser or office-compatible RUN+ Diffuser, quick connect system, pre-wired, with through-wiring except for 1200 mm, 600 mm and slave, with RUN: xHE = 1060 lm and 11 W per 1,2 m; HE = 1500 lm and 14 W per 1,2 m; HPE = 1980 lm and 20 W per 1,2 m : HO = 2700 lm and 26 W per 1,2 m; with RUN+ [UGR < 19 und Lmax > 65° < 3000 cd/m²]; HPE = 1800 lm and 20 W per 1,2 m; (HO = 2450 lm and 26 W per 1,2 m)

Colour temperature	Notes	Length	Master/Slave	Ref. n°
4000 K	xHE: Non-extendable, supplied in two parts	3000 mm		2003.5062
4000 K	HE: Non-extendable, supplied in two parts	3000 mm		2003.5065
4000 K	HPE: Non-extendable, supplied in two parts	3000 mm		2006.2707
4000 K	HO: Non-extendable, supplied in two parts	3000 mm		2006.8483
4000 K	xHE: Non-extendable	1500 mm		2004.9787
4000 K	HE: Non-extendable	1500 mm		2004.9785
4000 K	HPE: Non-extendable	1500 mm		2006.2718
4000 K	HO: Non-extendable	1500 mm		2006.8494
4000 K	xHE: Non-extendable, with emergency unit	1500 mm		2004.1689
4000 K	HE: Non-extendable, with emergency unit	1500 mm		2004.1690
4000 K	HPE: Non-extendable, with emergency unit	1500 mm		2006.2711
4000 K	HO: Non-extendable, with emergency unit	1500 mm		2006.8488
4000 K	xHE: Master batten, can be extended by min. 350 mm to max. 1450 mm	1500 mm	Master	2003.5061
4000 K	HE: Master batten, can be extended by min. 350 mm to max. 1450 mm	1500 mm	Master	2003.5064
4000 K	HPE: Master batten, can be extended by min. 350 mm to max. 1450 mm	1500 mm	Master	2006.2706
4000 K	HO: Master batten, can be extended by min. 350 mm to max. 1450 mm	1500 mm	Master	2006.8482
4000 K	xHE: Master batten, can be extended by min. 0 mm to max. 600 mm	1200 mm	Master	2003.5060
4000 K	HE: Master batten, can be extended by min. 0 mm to max. 600 mm	1200 mm	Master	2003.5063
4000 K	HPE: Master batten, can be extended by min. 0 mm to max. 600 mm	1200 mm	Master	2006.2705
4000 K	HO: Master batten, can be extended by min. 0 mm to max. 600 mm	1200 mm	Master	2006.8481
4000 K	xHE: Master batten, can be extended by min. 300 mm to max. 1200 mm	600 mm	Master	2004.4175
4000 K	HE: Master batten, can be extended by min. 300 mm to max. 1200 mm	600 mm	Master	2004.4176
4000 K	HPE: Master batten, can be extended by min. 300 mm to max. 1200 mm	600 mm	Master	2006.2715
4000 K	HO: Master batten, can be extended by min. 300 mm to max. 1200 mm	600 mm	Master	2006.8491
4000 K	Extension for Master batten, can be applied once or repeatedly along the batten, or at the end	600 mm	Slave	2003.5075
4000 K	Extension for Master batten, can be applied once or repeatedly along the batten, or at the end	300 mm	Slave	2003.5074
4000 K	Extension for Master or Slave batten, can only be applied at the end of the batten	250 mm	Slave End	2003.5073
4000 K	Extension for Master or Slave batten, can only be applied at the end of the batten	200 mm	Slave End	2003.5072
4000 K	Extension for Master or Slave batten, can only be applied at the end of the batten	150 mm	Slave End	2003.5071
4000 K	Extension for Master or Slave batten, can only be applied at the end of the batten	100 mm	Slave End	2003.5070
4000 K	Extension for Master or Slave batten, can only be applied at the end of the batten	50 mm	Slave End	2003.5069
3000 K	xHE: Non-extendable, supplied in two parts	3000 mm		2003.5046
3000 K	HE: Non-extendable, supplied in two parts	3000 mm		2003.5049
3000 K	HPE: Non-extendable, supplied in two parts	3000 mm		2006.2704
3000 K	HO: Non-extendable, supplied in two parts	3000 mm		2006.8480

CHANNEL S

Colour temperature	Notes	Length	Master/Slave	Ref. n°
3000 K	xHE: Non-extendable	1500 mm		2004.9784
3000 K	HE: Non-extendable	1500 mm		2004.9788
3000 K	HPE: Non-extendable	1500 mm		2006.2717
3000 K	HO: Non-extendable	1500 mm		2006.8493
3000 K	xHE: Non-extendable, with emergency unit	1500 mm		2004.1686
3000 K	HE: Non-extendable, with emergency unit	1500 mm		2004.1687
3000 K	HPE: Non-extendable, with emergency unit	1500 mm		2006.2712
3000 K	HO: Non-extendable, with emergency unit	1500 mm		2006.8487
3000 K	xHE: Master batten, can be extended by min. 350 mm to max. 1450 mm	1500 mm	Master	2003.5045
3000 K	HE: Master batten, can be extended by min. 350 mm to max. 1450 mm	1500 mm	Master	2003.5048
3000 K	HPE: Master batten, can be extended by min. 350 mm to max. 1450 mm	1500 mm	Master	2006.2703
3000 K	HO: Master batten, can be extended by min. 350 mm to max. 1450 mm	1500 mm	Master	2006.8479
3000 K	xHE: Master batten, can be extended by min. 0 mm to max. 600 mm	1200 mm	Master	2003.5044
3000 K	HE: Master batten, can be extended by min. 0 mm to max. 600 mm	1200 mm	Master	2003.5047
3000 K	HPE: Master batten, can be extended by min. 0 mm to max. 600 mm	1200 mm	Master	2006.2701
3000 K	HO: Master batten, can be extended by min. 0 mm to max. 600 mm	1200 mm	Master	2006.8478
3000 K	xHE: Master batten, can be extended by min. 300 mm to max. 1200 mm	600 mm	Master	2004.4166
3000 K	HE: Master batten, can be extended by min. 300 mm to max. 1200 mm	600 mm	Master	2004.4173
3000 K	HPE: Master batten, can be extended by min. 300 mm to max. 1200 mm	600 mm	Master	2006.2714
3000 K	HO: Master batten, can be extended by min. 300 mm to max. 1200 mm	600 mm	Master	2006.849
3000 K	Extension for Master batten, can be applied once or repeatedly along the batten, or at the end	600 mm	Slave	2003.5059
3000 K	Extension for Master batten, can be applied once or repeatedly along the batten, or at the end	300 mm	Slave	2003.5058
3000 K	Extension for Master or Slave batten, can only be applied at the end of the batten	250 mm	Slave End	2003.5057
3000 K	Extension for Master or Slave batten, can only be applied at the end of the batten	200 mm	Slave End	2003.5056
3000 K	Extension for Master or Slave batten, can only be applied at the end of the batten	150 mm	Slave End	2003.5055
3000 K	Extension for Master or Slave batten, can only be applied at the end of the batten	100 mm	Slave End	2003.5054
3000 K	Extension for Master or Slave batten, can only be applied at the end of the batten	50 mm	Slave End	2003.5053
2700-6500 K	HPE: Non-extendable, supplied in two parts	3000 mm		2006.2710
2700-6500 K	HO: Non-extendable, supplied in two parts	3000 mm		2006.8486
2700-6500 K	HPE: Master batten, can be extended by min. 350 mm to max. 1450 mm	1500 mm	Master	2006.2709
2700-6500 K	HO: Master batten, can be extended by min. 350 mm to max. 1450 mm	1500 mm	Master	2006.8485
2700-6500 K	HPE: Master batten, can be extended by min. 0 mm to max. 600 mm	1200 mm	Master	2006.2708
2700-6500 K	HO: Master batten, can be extended by min. 0 mm to max. 600 mm	1200 mm	Master	2006.8484
2700-6500 K	HPE: Master batten, can be extended by min. 300 mm to max. 1200 mm	600 mm	Master	2006.2716
2700-6500 K	HO: Master batten, can be extended by min. 300 mm to max. 1200 mm	600 mm	Master	2006.8492
2700-6500 K	HPE: Non-extendable, with emergency unit	1500 mm		2006.2713
2700-6500 K	HO: Non-extendable, with emergency unit	1500 mm		2006.8489
2700-6500 K	Extension for Master batten, can be applied once or repeatedly along the batten, or at the end	600 mm	Slave	2003.5085
2700-6500 K	Extension for Master batten, can be applied once or repeatedly along the batten, or at the end	300 mm	Slave	2003.5084
2700-6500 K	Extension for Master or Slave batten, can only be applied at the end of the batten	250 mm	Slave End	2003.5083
2700-6500 K	Extension for Master or Slave batten, can only be applied at the end of the batten	200 mm	Slave End	2003.5082
2700-6500 K	Extension for Master or Slave batten, can only be applied at the end of the batten	150 mm	Slave End	2003.5081
2700-6500 K	Extension for Master or Slave batten, can only be applied at the end of the batten	100 mm	Slave End	2003.5080
2700-6500 K	Extension for Master or Slave batten, can only be applied at the end of the batten	50 mm	Slave End	2003.5079

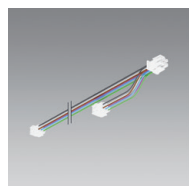
CHANNEL S



BATTEN LUMINAIRE CORNER CONNECTOR CHANNEL S

Corner connector for RUN diffuser or office-suitable RUN+ diffuser, quick-connect system, pre-wired, without through-wiring, slave, suitable for corner connector

Colour temperature	Notes	Master/Slave	Ref. n°
4000 K	horizontal, right	Slave	1 2004.7103
4000 K	horizontal, left	Slave	1 2004.7106
4000 K	vertical	Slave	2 2004.7109
3000 K	horizontal, right	Slave	1 2004.7102
3000 K	horizontal, left	Slave	1 2004.7105
3000 K	vertical	Slave	2 2004.7108
2700 - 6500 K	horizontal, right	Slave	1 2004.7104
2700 - 6500 K	horizontal, left	Slave	1 2004.7107
2700 - 6500 K	vertical	Slave	2 2004.7110

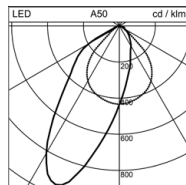
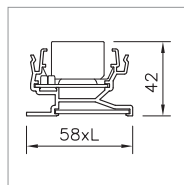


MAINS WIRING FOR CORNER CONNECTOR CHANNEL S

Mains wiring for corner connector Channel S 6 poles

Length	Ref. n°
1500 mm	2005.2409

CHANNEL S

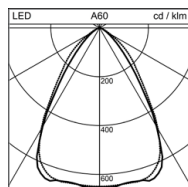


BATTEN LUMINAIRE CHANNEL S

Asymmetric radiant, silver, quick connect system, pre-wired, with through-wiring except at 1200 mm and Slave,
HO: 2700 lm and 26 W per 1.2 m

Colour temperature	Notes	Length	Master/Slave	Ref. n°
4000 K	HO: Non-extendable, supplied in two parts	3000 mm		2006.1519
4000 K	HO: Non-extendable	1500 mm		2006.5928
4000 K	HO: Master batten, can be extended by 600 mm min. to 1200 mm max	1500 mm	Master	2005.9724
4000 K	HO: Master batten, can be extended by. 0 mm min. to 1200 mm max without through-wiring	1200 mm	Master	2005.9723
4000 K	Extension for master batten, applicable once in the middle or at the end without through-wiring	1200 mm	Slave	2005.9726
4000 K	Extension for master batten, applicable once in the middle or at the end without through-wiring, supplied in two parts	600 mm	Slave	2005.9725
3000 K	HO: Non-extendable, supplied in two parts	3000 mm		2006.1518
3000 K	HO: Non-extendable	1500 mm		2006.5927
3000 K	HO: Master batten, can be extended by 600 mm min. to 1200 mm max	1500 mm	Master	2005.9719
3000 K	HO: Master batten, can be extended by. 0 mm min. to 1200 mm max without through-wiring	1200 mm	Master	2005.9718
3000 K	Extension for master batten, applicable once in the middle or at the end without through-wiring	1200 mm	Slave	2005.9721
3000 K	Extension for master batten, applicable once in the middle or at the end without through-wiring	600 mm	Slave	2005.9720
6500 K	HO: Non-extendable, supplied in two parts	3000 mm		2006.1520
6500 K	HO: Master batten, can be extended by. 0 mm min. to 1200 mm max	1500 mm	Master	2005.9729
6500 K	HO: Master batten, can be extended by. 0 mm min. to 1200 mm max without through-wiring	1200 mm	Master	2005.9728
6500 K	Extension for master batten, applicable once in the middle or at the end without through-wiring	1200 mm	Slave	2005.9731
6500 K	Extension for master batten, applicable once in the middle or at the end without through-wiring	600 mm	Slave	2005.9730

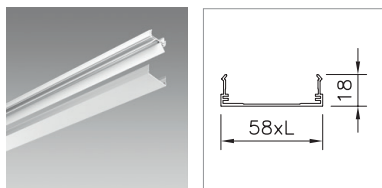
CHANNEL S OFFICE



BATTEN LUMINAIRE CHANNEL S BOOST OFFICE

Quick connect system, pre-wired, with through-wiring except for Slave, HE = 4000 lm and 41 W per 1,5 m; HPE = 4500 lm and 49 W per 1,5 m

Colour temperature	Notes	Length	Master/Slave	Ref. n°
4000 K	HE: Non-extendable, supplied in two parts	3000 mm		2003.5008
4000 K	HPE: Non-extendable, supplied in two parts	3000 mm		2003.5011
4000 K	HE: Master batten, can be extended by 0 mm min. to 1200 mm max.	1500 mm	Master	2003.5007
4000 K	HPE: Master batten, can be extended by 0 mm min. to 1200 mm max.	1500 mm	Master	2003.5010
4000 K	HE: Master batten, can be extended by 600 mm min. to 1200 mm max	600 mm	Master	2004.4137
4000 K	HPE: Master batten, can be extended by 600 mm min. to 1200 mm max	600 mm	Master	2004.4138
4000 K	Extension for Master batten, can be applied once or repeatedly along the batten, or at the end	600 mm	Slave	2003.5013
4000 K	Extension for Master batten, can be applied once or repeatedly along the batten, or at the end	300 mm	Slave	2003.5012
3000 K	HE: Non-extendable, supplied in two parts	3000 mm		2003.5000
3000 K	HPE: Non-extendable, supplied in two parts	3000 mm		2003.5003
3000 K	HE: Master batten, can be extended by 0 mm min. to 1200 mm max.	1500 mm	Master	2003.4999
3000 K	HPE: Master batten, can be extended by 0 mm min. to 1200 mm max.	1500 mm	Master	2003.5002
3000 K	HE: Master batten, can be extended by 600 mm min. to 1200 mm max	600 mm	Master	2004.4129
3000 K	HPE: Master batten, can be extended by 600 mm min. to 1200 mm max	600 mm	Master	2004.4135
3000 K	Extension for Master batten, can be applied once or repeatedly along the batten, or at the end	600 mm	Slave	2003.5005
3000 K	Extension for Master batten, can be applied once or repeatedly along the batten, or at the end	300 mm	Slave	2003.5004

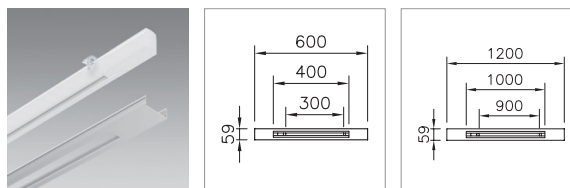


BLIND COVER KIT CHANNEL S

RUN+/RUN/BOOST OFFICE

For mounting on mounting rail, with through-wiring, anodised aluminium

Length	Ref. n°
300 mm	2003.5387
600 mm	2003.5388
1200 mm	2002.6784
1500 mm	2003.5389
2400 mm	2005.1027
3000 mm	2004.5405

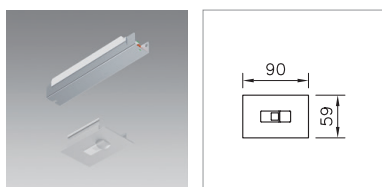


CONDUCTOR TRACK KIT CHANNEL S

FOR SPOTLIGHT VERSION CONNECTION DALI

Stromschienen-Set Channel S mit integrierter Stromschiene Global Trac Pulse, with through-wiring

Length	Ref. n°
600 mm	1 2004.7096
1200 mm	2 2004.7097



SENSOR KIT CHANNEL S

Sensor for brightness control and presence detection, for single luminaire, control module pluggable on the back of a batten luminaire

Length	Ref. n°
Stand Alone Sensor for single luminaires up to 1500 mm	2004.7089
Stand Alone Sensor for single luminaires or systems from 1500 mm	2004.7091



SENSOR KIT CHANNEL S

Sensor for brightness control and presence detection, with through-wiring, DALI, for system

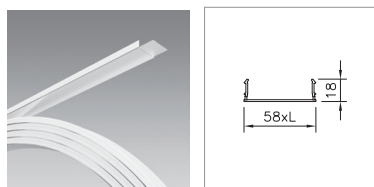
Length	Ref. n°
DALI Slave-Sensor	2004.7092



SENSOR KIT CHANNEL S

For tracking control: brightness and motion sensor adjustable, for single luminaire

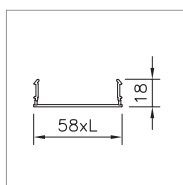
Length	Ref. n°
Remote control Channel S	2004.8332



DIFFUSER CHANNEL S OFFICE

RUN+, rollable and office-suitable, for a perfectly glare-free light line with no visible interruptions

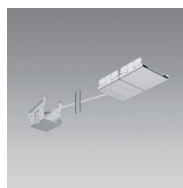
Length	Ref. n°
2406 mm	2007.5836
3004 mm	2007.5846
3608 mm	2007.5837
4506 mm	2007.5847
9604 mm	2007.5855
19202 mm	2007.5856



DIFFUSER CHANNEL S

RUN, rollable optics

Length	Ref. n°
2405 mm	2007.7921
3605 mm	2007.7923
7204 mm	2007.7925
24002 mm	2007.7926



CUTTING AID

for RUN Diffuser or office-compatible RUN+ Diffuser

Notes	Ref. n°
	2005.2936