



CHANNEL S UP

The pendant luminaire CHANNEL S UP creates a pleasant atmosphere in any room. Its elegant appearance and first-class lighting quality make it particularly appealing for offices and adjoining zones. With its indirect light component pleasantly illuminating the ceiling, it enhances workplace ergonomics enormously and offers new possibilities in lighting design. The extremely slender CHANNEL S UP is available with four different optics that allow the greatest scope in lighting planning. However, the luminaire does not only provide high-quality light, but also makes a noticeable contribution to people's well-being thanks to the integrated Tunable White technology. So slim yet packed with sophisticated technology. CHANNEL S UP unites versatility with standard-compliant workplace lighting in a perfect form.

FEATURES

"S" as in slim: aesthetic design, extremely compact dimensions, 65 x 71 mm

Channel S Up: continuous line of light of up to 24 m in length thanks to the rollable RUN Diffuser, can be shortened on site

Channel S Up Office: maximum visual comfort thanks to glare control with the office-compatible diffuser RUN+ and a high indirect light component

Channel S Up Boost Office: glare control with office-compatible louvre optics, particularly efficient thanks to high direct light component

RUN+ and louvre optics Boost guarantee standard-compliant planning according to EN 12464-1

High luminous flux from 1500 lm to 3300 lm direct light component per metre, depending on product line

Shadow-free line of light and timeless design

Asymmetrical light distribution for standard-compliant blackboard lighting and aesthetic wall illumination

TECHNICAL DATA

Luminous flux of luminaire	up to 5100 lm/1,2 m
Colour temperature	3000 K, 4000 K, 2700–6500 K
Colour Rendering Index [CRI]	Ra ≥ 80
Maintained luminous flux	L80 50'000 h
Protection class	I
Ingress Protection	IP20
Photobiological safety	risk group 1, low risk
Colour consistency	SDCM 3

SPECIFICATIONS

Lengths: 1250 mm, 1550 mm, 2450 mm, [3650 mm using system components]

End faces feature expansion compensation, generating a visually seamless, flush-mounted diffuser effect

Lateral surfaces are perceived as seamless thanks to embedded end faces

Support profile and end faces made of aluminium, natural anodised

No visible screws

Colour temperatures: 3000 K, 4000 K, 2700–6500 K (except Channel S Up Boost)

Indirect light component from 20 % [Boost Office] to 65 % [Office]

Operating unit integrated

Dimmable digital DALI

Also available as a system

APPLICATION AREAS

Office & Education: open-plan offices, staff training facilities, conference rooms, libraries, classrooms

Retail & Hospitality: checkout areas, shopping malls

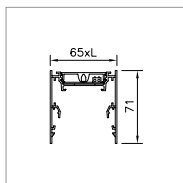
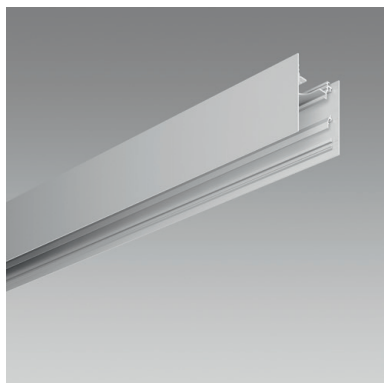
Industry: working areas



IP20 650°C



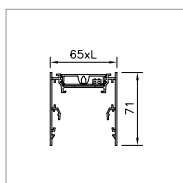
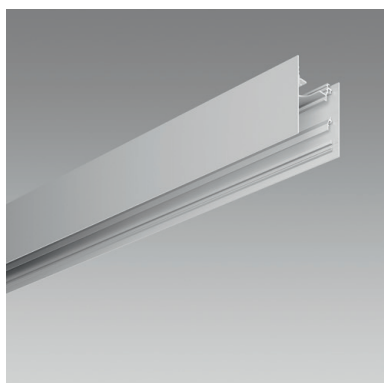
CHANNEL S UP



TRAGPROFIL FÜR LICHTKANALSYSTEME CHANNEL S UP KLEINSTES SYSTEM

Anfang/Ende, ohne Betriebsgerät, LEDs für indirekten Anteil vormontiert, für CHANNEL S (RUN) sowie CHANNEL S OFFICE (RUN+)

Colour temperature	Length	Ref. n°
4000 K	3650 mm	2001.4777
3000 K	3650 mm	2001.4776
2700–6500 K	3650 mm	2001.4778

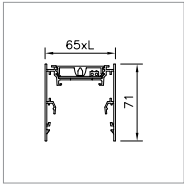
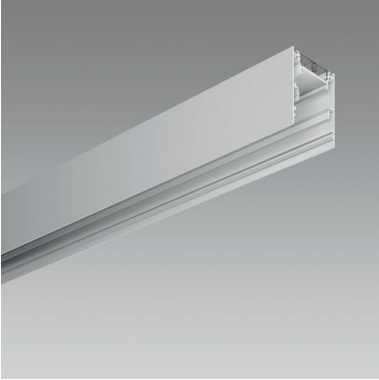


TRAGPROFIL FÜR LICHTKANALSYSTEME CHANNEL S UP ANFANG/ENDE

ohne Betriebsgerät, LEDs für indirekten Anteil vormontiert, für CHANNEL S (RUN) sowie CHANNEL S OFFICE (RUN+)

Colour temperature	Length	Ref. n°
4000 K	2425 mm	2001.1646
3000 K	2425 mm	2001.1644
2700–6500 K	2425 mm	2001.1650
4000 K	3625 mm	2001.1648
3000 K	3625 mm	2001.1645
2700–6500 K	3625 mm	2001.1652

CHANNEL S UP

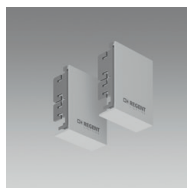


TRAGPROFIL FÜR LICHTKANALSYSTEME CHANNEL S UP MITTE

ohne Betriebsgerät, LEDs für indirekten Anteil vormontiert, für CHANNEL S [RUN] sowie CHANNEL S OFFICE [RUN+]

Colour temperature	Length	Ref. n°
4000 K	2400 mm	2001.1655
3000 K	2400 mm	2001.1653
2700–6500 K	2400 mm	2001.1658
4000 K	3600 mm	2001.1656
3000 K	3600 mm	2001.1654
2700–6500 K	3600 mm	2001.1659

CHANNEL S UP



END CAPS SET CHANNEL S UP

left/right

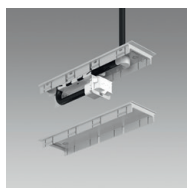
Notes	Ref. n°
2 pieces	2001.0625



PROFILE CONNECTOR SET CHANNEL S UP

for support profile

Notes	Ref. n°
	2001.9365



MAINS CONNECTION KIT CHANNEL S UP

complete with connecting piece

Length	Ref. n°
1500 mm, 5 poles	2001.1583
3000 mm, 5 poles	2001.1584
1500 mm, for NOT 6 poles	2003.3181
3000 mm, for NOT 6 poles	2003.3183



ROD SUSPENSION CHANNEL S

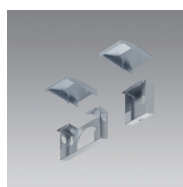
2 pc. set, recommended: at least every 1.5 m

Length	Ref. n°
1500 mm	2001.0619
3000 mm	2001.0618



CANOPY KIT UNIVERSAL

Notes	Ref. n°
	2001.8467



WALL RETAINER KIT CHANNEL S

2 pc. kit, recommended: at least every 1.5 m

Notes	Ref. n°
Feed-in set, consisting of two wall brackets and two laminations, wide wall bracket for feed-in	2004.6119
further wall brackets, set consisting of one wall bracket and one lamination	2004.6121

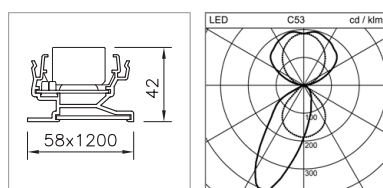
CHANNEL S UP



BATTEN LUMINAIRE CHANNEL S UP

for RUN Diffuser or office-compatible RUN+ Diffuser, with control gear, with feed point for indirect component, quick connect system, pre-wired, through-wiring incl.

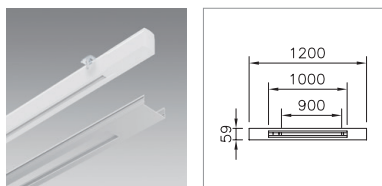
System power	Luminous flux level	Colour temperature	Length	Ref. n°	Ref. n°
29 W	HE	4000 K	1200 mm		2001.0820
29 W	HE	3000 K	1200 mm		2001.0816
29 W	HE	4000 K	1200 mm	with emergency unit	2003.3161
29 W	HE	3000 K	1200 mm	with emergency unit	2003.3159
42 W	HPE	4000 K	1200 mm		2006.2697
42 W	HPE	3000 K	1200 mm		2006.2696
42 W	HPE	2700-6500 K	1200 mm		2006.2698
42 W	HPE	4000 K	1200 mm	with emergency unit	2006.2700
42 W	HPE	3000 K	1200 mm	with emergency unit	2006.2699



BATTEN LUMINAIRE CHANNEL S UP ASYMMETRISCH

Asymmetrical beam, silver, with control gear, with feed point for indirect component, quick connect system, pre-wired, through-wiring incl.

System power	Luminous flux of luminaire	Colour temperature	Length	Ref. n°
59 W	5700 lm	3000 K	1200 mm	2006.2011
59 W	6000 lm	4000 K	1200 mm	2006.2012
49 W	4850 lm	6500 K	1200 mm	2006.2013

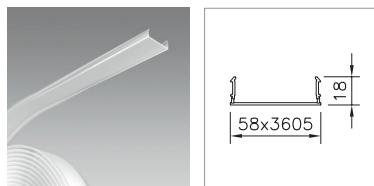


CONDUCTOR TRACK KIT CHANNEL S

FOR SPOTLIGHT VERSION CONNECTION DALI

with conductor track Global Trac Pulse

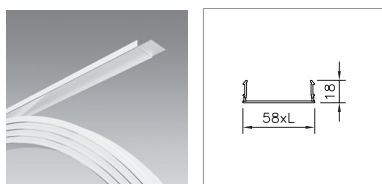
Length	Ref. n°
1200 mm	2004.7097



DIFFUSER CHANNEL S

rollable opal, can be cut and used for several light lines

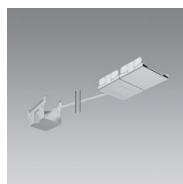
Length	Ref. n°
3605 mm	2002.3525
7204 mm	2002.3527
24002 mm	2002.3528



DIFFUSER CHANNEL S OFFICE

RUN+, rollable and office-suitable, for a perfectly glare-free light line with no visible interruptions

Length	Ref. n°
2406 mm	2005.1242
3004 mm	2005.1248
3608 mm	2005.1243
4506 mm	2005.1250
9604 mm	2005.1252
19202 mm	2005.1253



CUTTING AID

for RUN Diffuser or office-compatible RUN+ Diffuser

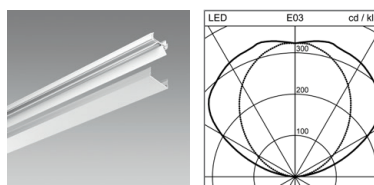
Notes	Ref. n°
	2005.2936



BLIND COVER KIT CHANNEL S

for mounting on mounting rail, without indirect lighting, with through-wiring, of aluminium, natural anodised

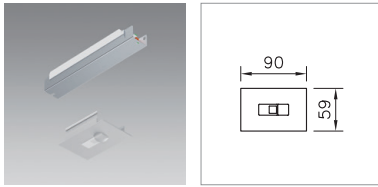
Length	Ref. n°
1200 mm	2002.6784



BLIND COVER KIT CHANNEL S UP

for mounting on mounting rail, with control gear for indirect lighting, with through-wiring, of aluminium, natural anodised

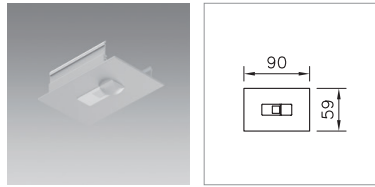
Luminous flux level	Ref. n°
HE	2002.6789
HPE	2002.6787



SENSOR KIT CHANNEL S

Sensor for brightness control and presence detection

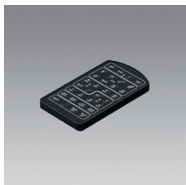
Length	Ref. n°
Stand Alone Sensor for single luminaires up to 1500 mm	2004.7089
Stand Alone Sensor for single luminaires or systems from 1500 mm	2004.7091



SENSOR KIT CHANNEL S

Sensor for brightness control and presence detection

Length	Ref. n°
DALI Slave-Sensor	2004.7092



REMOTE CONTROL CHANNEL S

For tracking control: brightness and motion sensor adjustable

Length	Ref. n°
Remote control Channel S	2004.8332

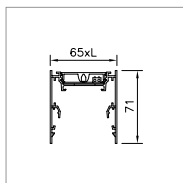
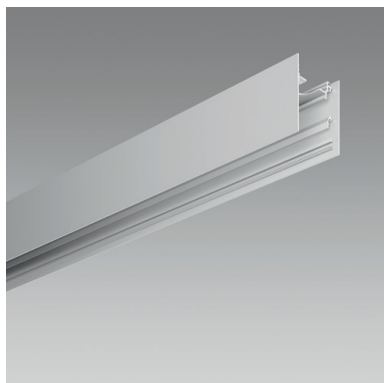


DISMANTLING TOOL PURELITE

Tool for removing the batten from the support profile

Notes	Ref. n°
	1022.8951

CHANNEL S UP BOOST OFFICE

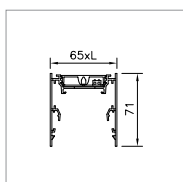
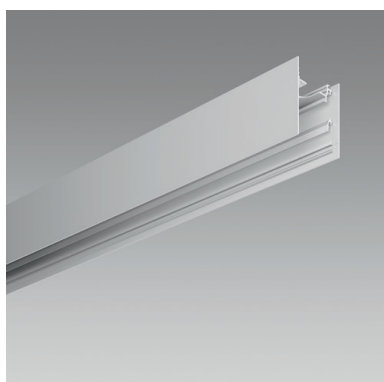


SUPPORT PROFILE FOR CHANNEL LIGHTING SYSTEM CHANNEL S UP BOOST OFFICE

SMALLEST SYSTEM

Initial/end module, without control gear, LEDs for indirect component pre-installed

Colour temperature	Length	Ref. n°
4000 K	3650 mm	2001.4780
3000 K	3650 mm	2001.4779



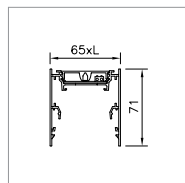
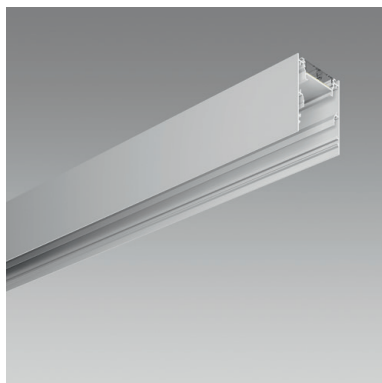
SUPPORT PROFILE FOR CHANNEL LIGHTING SYSTEM CHANNEL S UP BOOST OFFICE

INITIAL/END MODULE

without control gear, LEDs for indirect component pre-installed

Colour temperature	Length	Ref. n°
4000 K	2425 mm	2001.4001
3000 K	2425 mm	2001.3997
4000 K	3625 mm	2001.4002
3000 K	3625 mm	2001.3999

CHANNEL S UP BOOST OFFICE

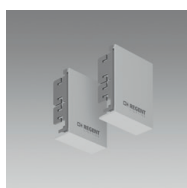


SUPPORT PROFILE FOR CHANNEL LIGHTING SYSTEM CHANNEL S UP BOOST OFFICE

MITTE

without control gear, LEDs for indirect component pre-installed

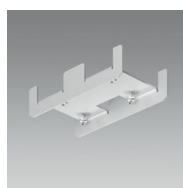
Colour temperature	Length	Ref. n°
4000 K	2400 mm	2001.4006
3000 K	2400 mm	2001.4003
4000 K	3600 mm	2001.4007
3000 K	3600 mm	2001.4004



END CAPS SET CHANNEL S UP

left/right

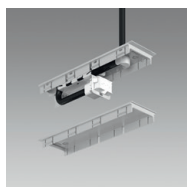
Notes	Ref. n°
2 pieces	2001.0625



PROFILE CONNECTOR SET CHANNEL S UP

for support profile

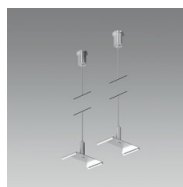
Notes	Ref. n°
	2001.9365



MAINS CONNECTION KIT CHANNEL S UP

complete with connecting piece

Length	Ref. n°
1500 mm, 5 poles	2001.1583
3000 mm, 5 poles	2001.1584
1500 mm, for NOT 6 poles	2003.3181
3000 mm, for NOT 6 poles	2003.3183



ROD SUSPENSION CHANNEL S

2 pc. set, recommended: at least every 1.5 m

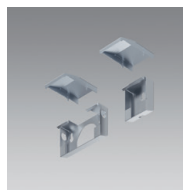
Length	Ref. n°
1500 mm	2001.0619
3000 mm	2001.0618

CHANNEL S UP BOOST OFFICE



CANOPY KIT UNIVERSAL

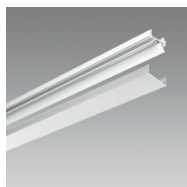
Notes	Ref. n°
	2001.8467



WALL RETAINER KIT CHANNEL S

2 pc. kit, recommended: at least every 1.5 m

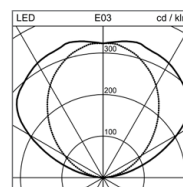
Notes	Ref. n°
Feed-in set, consisting of two wall brackets and two laminations, wide wall bracket for feed-in	2004.6119
further wall brackets, set consisting of one wall bracket and one lamination	2004.6121



BLIND COVER KIT CHANNEL S

for mounting on mounting rail, natural anodised

Length	Ref. n°
1200 mm	2002.6784



BLIND COVER KIT CHANNEL S UP BOOST

for mounting on mounting rail, with control gear for indirect lighting, with through-wiring, of aluminium, natural anodised

Luminous flux level	Ref. n°
HE	2003.0383
HPE	2002.6790



BATTEN LUMINAIRE CHANNEL S UP BOOST OFFICE

with control gear, with feed point for indirect component, quick connect system, pre-wired, through-wiring incl., pre-installed optics

System power	Luminous flux level	Colour temperature	Length	Ref. n°
32 W	HE	4000 K	1200 mm	2002.9026
32 W	HE	3000 K	1200 mm	2002.9024
43 W	HPE	4000 K	1200 mm	2001.0814
43 W	HPE	3000 K	1200 mm	2001.0812



DISMANTLING TOOL PURELITE

Tool for removing the batten from the support profile

Notes	Ref. n°
	1022.8951