



CHANNEL S

CHANNEL S creates a pleasant atmosphere in any room. Its elegant appearance and first-class lighting quality make it particularly appealing for offices and adjoining zones. The extremely slender CHANNEL S is available in a wide variety of versions, with four different optics and several mounting options that allow the greatest scope in lighting planning. However, the luminaire does not only provide high-quality light and planning precision, but also makes a noticeable contribution to people's well-being thanks to the integrated Tunable White technology. So slim yet packed with sophisticated technology. CHANNEL S unites versatility with standard-compliant workplace lighting in a perfect form.

FEATURES

"S" as in slim, aesthetic design in extremely compact dimensions of 65 x 60 mm

Available with integrated RUN Diffuser or office-compatible RUN+ Diffuser for continuous, seamless lines of light allowing precise planning up to 24 m length

Channel S Boost Office: very aesthetic louvre optics optimized for LED, particularly efficient, planning according to EN 12464-1, up to 3600 lm / 1,2 m

Economical overall solution featuring maximum ergonomics for the user

Visually perfect transition from profile to diffuser without gasket

Asymmetrical light distribution for standard-compliant blackboard lighting and wall illumination

TECHNICAL DATA

Luminous flux of luminaire	720 lm-4100 lm
Colour temperature	3000 K, 4000 K, 2700 K-6500 K
Colour Rendering Index [CRI]	Ra >80
Maintained luminous flux	L80 [B10] 50'000 h
Glare value	Up to UGR < 19
Protection class	I
Ingress Protection	IP20, optional IP40 up to IP54
Photobiological safety	Risk group 0, no risk

SPECIFICATIONS

100% direct light emission

End faces feature expansion compensation, generating a visually seamless, flush-mounted diffuser effect

Support profile and ends (visible part) in natural anodised aluminium

No visible screws

Colour temperature can be adjusted individually with the Tunable White technology

LED batten luminaire replaceable on site

Dimmable digital DALI

Operating unit integrated

Also available ceiling and wall mounted luminaires as well as system without cover frame

APPLICATION AREAS

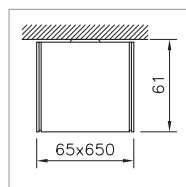
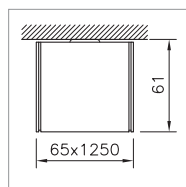
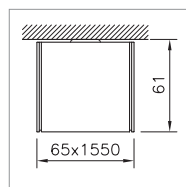
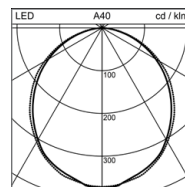
Office & Education: offices, open-plan offices, staff training facilities, conference rooms, libraries, classrooms, circulation zones

Industry: working areas

Retail & Hospitality: checkout areas, shopping malls

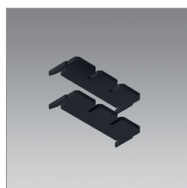


IP20 230V


1

2

3


CEILING MOUNTED LUMINAIRE CHANNEL S

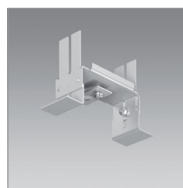
Length	System power	Luminous flux of luminaire	Colour temperature	Notes	Ref. n°
650 mm	8.5 W	750 lm	4000 K		1 2003.3648
650 mm	8.5 W	720 lm	3000 K		1 2003.3645
650 mm	13 W	1100 lm	4000 K		1 2003.3654
650 mm	13 W	1060 lm	3000 K		1 2003.3651
650 mm	16 W	1360 lm	4000 K		1 2003.0743
650 mm	16 W	1300 lm	3000 K		1 2003.3657
650 mm	16 W	1360 lm	4000	IP54	1 2005.4905
650 mm	16 W	1300 lm	3000	IP54	1 2005.4908
1250 mm	14 W	1500 lm	4000 K		2 2003.3649
1250 mm	14 W	1440 lm	3000 K		2 2003.3646
1250 mm	23 W	2200 lm	4000 K		2 2003.3655
1250 mm	23 W	2100 lm	3000 K		2 2003.3652
1250 mm	23 W	2150 lm	2700-6500 K		2 2003.3662
1250 mm	23 W	2200lm	4000	with emergency unit	2 2004.4993
1250 mm	23 W	2100 lm	3000	with emergency unit	2 2004.4991
1250 mm	23 W	2150 lm	2700-6500 K	with emergency unit	2 2004.4994
1250 mm	28 W	2700 lm	4000 K		2 2003.0745
1250 mm	28 W	2600 lm	3000 K		2 2003.3658
1250 mm	28 W	2700 lm	4000	IP54	2 2005.4906
1250 mm	28 W	2600 lm	3000	IP54	2 2005.4909
1550 mm	17 W	1880 lm	4000 K		3 2003.3650
1550 mm	17 W	1800 lm	3000 K		3 2003.3647
1550 mm	27 W	2750 lm	4000 K		3 2003.3656
1550 mm	27 W	2650 lm	3000 K		3 2003.3653
1550 mm	27 W	2700 lm	2700-6500 K		3 2003.3663
1550 mm	27 W	2750 lm	4000	with emergency unit	3 2004.5037
1550 mm	27 W	2650 lm	3000	with emergency unit	3 2004.4992
1550 mm	27 W	2700 lm	2700-6500 K	with emergency unit	3 2004.4995
1550 mm	34 W	3400 lm	4000 K		3 2003.3660
1550 mm	34 W	3250 lm	3000 K		3 2003.3659
1550 mm	34 W	3400 lm	4000	IP54	3 2005.4911
1550 mm	34 W	3250 lm	3000	IP54	3 2005.4910



GASKET KIT CHANNEL S

IP40 in combination with RUN and RUN+ diffusers in one piece for single luminaire and system

Notes	Ref. n°
	2004.6603



MOUNTING KIT CHANNEL S

for the mounting of support profiles with or without trim, for 1 – 30 mm false ceilings, recommended: all 1.5 m

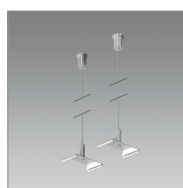
Notes	Ref. n°
	2003.1609



MOUNTING SPRING KIT CHANNEL S

made of spring steel, to facilitate mounting the support profile on the ceiling, to compensate for uneven surfaces, as a placeholder for cable routing, recommended: all 1.5 m

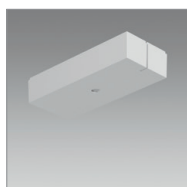
Notes	Ref. n°
Initial/end module	2003.5473



WIRE CORD SUSPENSION KIT CHANNEL S

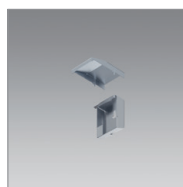
2 pc. kit, recommended: at least every 1.5 m

Length	Ref. n°
1500 mm	2001.0619
3000 mm	2001.0618



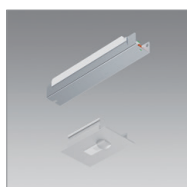
CANOPY KIT UNIVERSAL

Notes	Ref. n°
	2001.8467



WALL RETAINER CHANNEL S

Notes	Ref. n°
Set consisting of two wall brackets and two laminations. Wide wall bracket for feed-in	2004.6119
Set consisting of one wall bracket and one lamination	2004.6121



SENSOR MODULE SINGLE LUMINAIRE

Notes	Ref. n°
Stand-alone sensor for brightness control and presence detection, incl. control unit for luminaires up to 1500 mm	2004.7089
Remote control Channel S	2004.8332