



CHANNEL S BOOST OFFICE

CHANNEL S creates a pleasant atmosphere in any room. Its elegant appearance and first-class lighting quality make it particularly appealing for offices and adjoining zones. The extremely slender CHANNEL S is available in a wide variety of versions, with four different optics and several mounting options that allow the greatest scope in lighting planning. However, the luminaire does not only provide high-quality light and planning precision, but also makes a noticeable contribution to people's well-being thanks to the integrated Tunable White technology. So slim yet packed with sophisticated technology. CHANNEL S unites versatility with standard-compliant workplace lighting in a perfect form.

FEATURES

"S" as in slim, aesthetic design in extremely compact dimensions of 65 x 60 mm

Available with integrated RUN Diffuser or office-compatible RUN+ Diffuser for continuous, seamless lines of light allowing precise planning up to 24 m length

Channel S Boost Office: very aesthetic louvre optics optimized for LED, particularly efficient, planning according to EN 12464-1, up to 3600 lm / 1,2 m

Economical overall solution featuring maximum ergonomics for the user

Visually perfect transition from profile to diffuser without gasket

Asymmetrical light distribution for standard-compliant blackboard lighting and wall illumination

TECHNICAL DATA

Luminous flux of luminaire	720 lm-4100 lm
Colour temperature	3000 K, 4000 K, 2700 K-6500 K
Colour Rendering Index [CRI]	Ra >80
Maintained luminous flux	L80 [B10] 50'000 h
Glare value	Up to UGR < 19
Protection class	I
Ingress Protection	IP20, optional IP40 up to IP54
Photobiological safety	Risk group 0, no risk

SPECIFICATIONS

100% direct light emission

End faces feature expansion compensation, generating a visually seamless, flush-mounted diffuser effect

Support profile and ends (visible part) in natural anodised aluminium

No visible screws

Colour temperature can be adjusted individually with the Tunable White technology

LED batten luminaire replaceable on site

Dimmable digital DALI

Operating unit integrated

Also available ceiling and wall mounted luminaires as well as system without cover frame

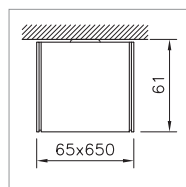
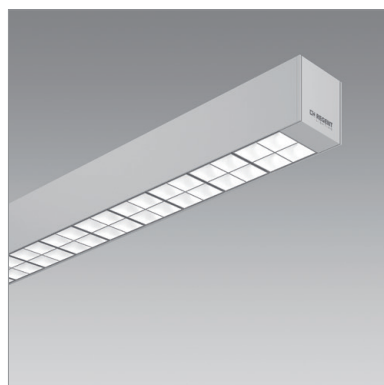
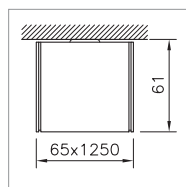
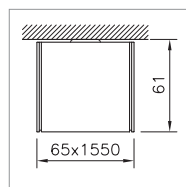
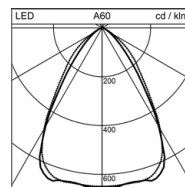
APPLICATION AREAS

Office & Education: offices, open-plan offices, staff training facilities, conference rooms, libraries, classrooms, circulation zones

Industry: working areas

Retail & Hospitality: checkout areas, shopping malls




1

2

3

CEILING MOUNTED LUMINAIRE CHANNEL S BOOST OFFICE

Length	System power	Luminous flux of luminaire	Colour temperature	Ref. n°
650 mm	19 W	1600 lm	4000 K	1 2003.3638
650 mm	19 W	1540 lm	3000 K	1 2003.3635
650 mm	22 W	2050 lm	4000 K	1 2003.0742
650 mm	22 W	1960 lm	3000 K	1 2003.3641
1250 mm	34 W	3200 lm	4000 K	2 2003.3639
1250 mm	34 W	3050 lm	3000 K	2 2003.3636
1250 mm	40 W	4100 lm	4000 K	2 2003.0499
1250 mm	40 W	3950 lm	3000 K	2 2003.3642
1550 mm	41 W	4000 lm	4000 K	3 2003.3640
1550 mm	41 W	3850 lm	3000 K	3 2003.3637
1550 mm	50 W	5100 lm	4000 K	3 2003.3644
1550 mm	50 W	4900 lm	3000 K	3 2003.3643



MOUNTING KIT CHANNEL S

for the mounting of support profiles with or without trim, for 1 – 30 mm false ceilings, recommended: all 1.5 m

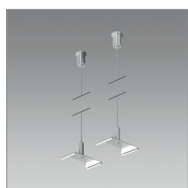
Notes	Ref. n°
	2003.1609



MOUNTING SPRING KIT CHANNEL S

made of spring steel, to facilitate mounting the support profile on the ceiling, to compensate for uneven surfaces, as a placeholder for cable routing, recommended: all 1.5 m

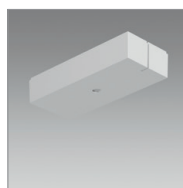
Notes	Ref. n°
Initial/end module	2003.5473



WIRE CORD SUSPENSION KIT CHANNEL S

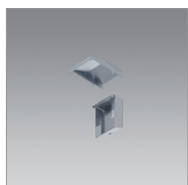
2 pc. kit, recommended: at least every 1.5 m

Length	Ref. n°
1500 mm	2001.0619
3000 mm	2001.0618



CANOPY KIT UNIVERSAL

Notes	Ref. n°
	2001.8467



WALL RETAINER CHANNEL S

Notes	Ref. n°
Set consisting of two wall brackets and two laminations. Wide wall bracket for feed-in	2004.6119
Set consisting of one wall bracket and one lamination	2004.6121