



PURELITE SLIM D

PURELITE SLIM is something to admire before it has even been turned on. The slimmest and thinnest luminaire in the industry, it is a feat of imagination and innovation. But then a switch is flicked. And PURELITE SLIM becomes a sleek strip of pure, uninterrupted, exceptional light. Although its design is hard to comprehend, the luminaire itself is easy to install at every stage of a project. So, the possibilities are as wide as PURELITE SLIM is so elegantly thin.

FEATURES

- Shadow-free lines of light, incl. illumination of the ceiling, timeless design
- Simple to integrate into the architecture thanks to its ultra-flat design: height of only 35 mm incl. control gear
- Available with integrated RUN diffuser (PURELITE SLIM D) or office-compatible RUN+ diffuser (PURELITE SLIM)
- Omnidirectional, with illumination of the ceiling, also available with direct lighting
- Batten luminaire range with a 2.5 cm design from standard, enables wall-to-wall planning

TECHNICAL DATA

Luminous flux of luminaire	1600-3100 lm, Office 2150 lm
Colour temperature	3000 K, 4000 K
Colour Rendering Index (CRI)	≥ 80
Maintained luminous flux	L80 75'000 h
Glare value	Up to UGR < 19 $L_{max} \geq 65^\circ \leq 3000 \text{ cd/m}^2$
Protection class	I
Ingress Protection	IP20
Photobiological safety	risk group 0, no risk

SPECIFICATIONS

- Recessed ceiling, ceiling and wall mounting, pendant luminaire and channel lighting system
- Extremely good homogeneous direct illumination and all-round illumination
- support profiles made of natural anodised aluminium
- Clip-in LED batten with integrated through-wiring for quick and easy mounting
- LED batten luminaire replaceable on site
- High luminous efficacy of up to 150 lm/W

APPLICATION AREAS

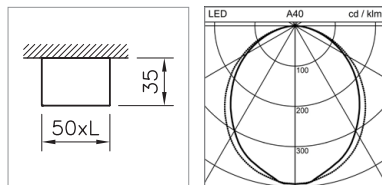
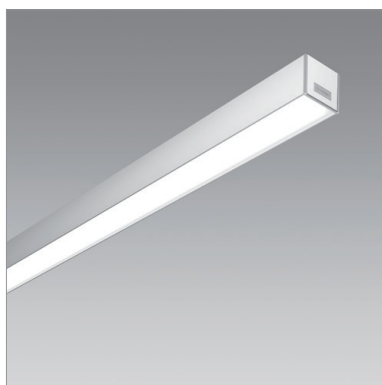
Office & Education: open-plan offices, individual offices, classrooms, meeting rooms, foyers and lobbies, circulation zones

Retail & Hospitality: hotels, restaurants

Home & Living

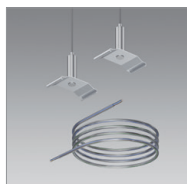


IP20 230V IK08 $\varnothing_{0.5m}$ 850°C **A+**



CEILING AND WALL MOUNTED LUMINAIRE PURELITE SLIM D

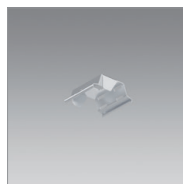
System power	Luminous flux of luminaire	Colour temperature	Length	Ref. n°
11 W	1000 lm	4000 K	759 mm	2004.4863
11 W	950 lm	3000 K	759 mm	2004.4860
14 W	1440 lm	4000 K	759 mm	2004.4869
14 W	1360 lm	3000 K	759 mm	2004.4866
15 W	1600 lm	4000 K	1209 mm	2004.4864
15 W	1520 lm	3000 K	1209 mm	2004.4861
21 W	2300 lm	4000 K	1209 mm	2004.4870
21 W	2200 lm	3000 K	1209 mm	2004.4867
18 W	2000 lm	4000 K	1509 mm	2004.4865
18 W	1900 lm	3000 K	1509 mm	2004.4862
26 W	2900 lm	4000 K	1509 mm	2004.4871
26 W	2750 lm	3000 K	1509 mm	2004.4868



SUSPENSION SET PURELITE SLIM D

Length 1500 mm, with wire suspension and self-lock, load max. 20 kg, mounting recommendation: every 1.5 m

Notes	Ref. n°
2 wire cords, can be clipped into place, with 2 m power feed cable, transparent, with cable clamp	2004.4908
1 wire cord, can be clipped into place, adjustable	2004.4079



MOUNTING SPRING KIT PURELITE SLIM D

made of spring steel, to facilitate mounting the support profile on the ceiling, to compensate for uneven surfaces, as a placeholder for cable routing. Recommended: all 1.5 m

Notes	Ref. n°
1 piece	2004.1005



MOUNTING SET PURELITE SLIM D

for the mounting of trimless support profiles, for 1–30 mm false ceilings, Recommended: all 1.5 m

Notes	Ref. n°
Kit consisting of 1 piece	2004.4083