



PURELITE D OFFICE

PURELITE is unobtrusive yet impressive. Like the golden thread of a captivating story, it runs seamlessly and elegantly through any environment. However, PURELITE is far more than just beautiful to look at. The uniquely slim luminaire of only 35 mm in height, including control gear, can be mounted easily and at any time without having to interfere with the statics of the ceiling. Therefore, PURELITE is also perfect for retrofitting. The luminaire is available in a variety of versions ranging from channel lighting system to pendant luminaire and thus allows maximum flexibility in planning for any project. PURELITE perfectly combines aesthetics and functionality. An adaptive line of pure and neat light. A leitmotif for every room.

FEATURES

Simple to integrate into the architecture thanks to its ultra-flat design: height of only 35 mm incl. control gear

Available with integrated RUN diffuser or office-compatible RUN+ diffuser for uninterrupted, seamless lines of light and centimetre-precise planning up to 21 m in length

End caps with expansion compensation guarantee flush-fitting diffuser without gap

Clip-in LED batten with integrated through-wiring for quick and easy mounting

For mounting in rows greater than 2250 mm, all lengths in increments of 150 mm

TECHNICAL DATA

Height x width	35 x 90 mm
Luminous flux of luminaire	1980-3330 lm
Colour temperature	3000 K, 4000 K
Colour Rendering Index [CRI]	Ra ≥ 80
Colour consistency	SDCM 3
Maintained luminous flux	L80 50'000 h
Protection class	I
Ingress Protection	IP20

SPECIFICATIONS

Direct lighting (version available with omni-directional lighting, incl. illumination of the ceiling – Purelite)

Available as a channel lighting system, recessed ceiling luminaire, ceiling and wall mounted luminaire or for pendant luminaire

Support profile made of anodised aluminium, natural finish

Opal diffuser made of high-grade plastic

Dimmable digital DALI

LED batten luminaire replaceable on site

Luminaire efficiency up to 141 lm/W

A shadow-free line of light with timeless design

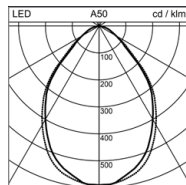
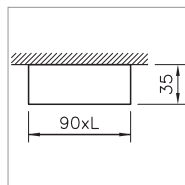
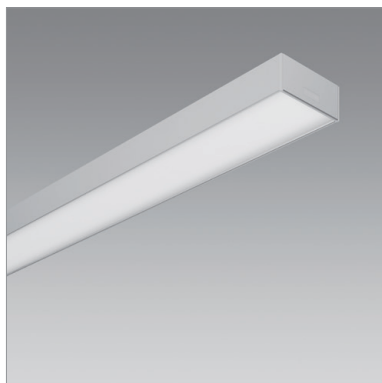
APPLICATION AREAS

Office & Education: open-plan offices, individual offices, classrooms, meeting rooms, foyers and lobbies, circulation zones

Retail & Hospitality: circulation zones



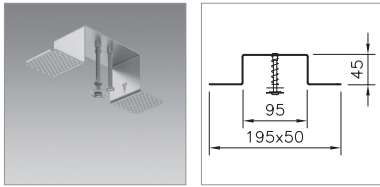
IP20 650°C 230V



CEILING MOUNTED LUMINAIRE PURELITE D OFFICE

Suitable for office lighting [$UGR \leq 19$; $L_{max} \geq 65^\circ \leq 3000 \text{ cd/m}^2$]

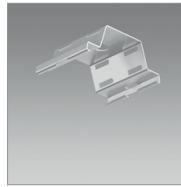
Length	System power	Luminous flux of luminaire	Colour temperature	Ref. n°
1208 mm	22 W	2400 lm	4000 K	2005.2597
1208 mm	22 W	2280 lm	3000 K	2005.2596
1508 mm	27 W	3000 lm	4000 K	2005.2599
1508 mm	27 W	2850 lm	3000 K	2005.2598
2108 mm	37 W	4200 lm	4000 K	2005.2601
2108 mm	37 W	3990 lm	3000 K	2005.2600



MOUNTING SET PURLITE

for the mounting of support profiles without trim, for 1 – 30 mm false ceilings, Recommended: all 1.5 m

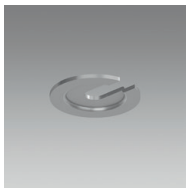
Notes	Bestell-Nummer
	1022.7191



BEFESTIGUNGSFEDER PURLITE

aus Federstahl, zur Befestigung des Tragprofils an der Decke, zum Ausgleich von Unebenheiten, als Platzhalter für Kabelführung, Empfehlung: alle 1,5 m

Notes	Bestell-Nummer
	1022.7195



SPLINT WASHER SET PURLITE

for mounting of the support profile, Recommended: all 1.5 m

Notes	Bestell-Nummer
promatised, 2 pieces	2004.0587
promatised, 5 pieces	2004.0588



SUSPENSION SET PURLITE

Length 1500 mm, with wire suspension and self-lock, load max. 20 kg, mounting recommendation: every 1.5 m

Notes	Bestell-Nummer
2 wire cords, can be clipped into place, with 2 m power feed cable, transparent, with cable clamp	2005.9888
1 wire cord, can be clipped into place, adjustable	2004.0193



DISMANTLING TOOL PURLITE

Tool for removing the batten from the support profile

Notes	Bestell-Nummer
	1022.8951