



PURELITE D

PURELITE is unobtrusive yet impressive. Like the golden thread of a captivating story, it runs seamlessly and elegantly through any environment. However, PURELITE is far more than just beautiful to look at. The uniquely slim luminaire of only 35 mm in height, including control gear, can be mounted easily and at any time without having to interfere with the statics of the ceiling. Therefore, PURELITE is also perfect for retrofitting. The luminaire is available in a variety of versions ranging from channel lighting system to pendant luminaire and thus allows maximum flexibility in planning for any project. PURELITE perfectly combines aesthetics and functionality. An adaptive line of pure and neat light. A leitmotif for every room.

FEATURES

Simple to integrate into the architecture thanks to its ultra-flat design: height of only 35 mm incl. control gear

Available with integrated RUN diffuser or office-compatible RUN+ diffuser for uninterrupted, seamless lines of light and centimetre-precise planning up to 21 m in length

End caps with expansion compensation guarantee flush-fitting diffuser without gap

Clip-in LED batten with integrated through-wiring for quick and easy mounting

For mounting in rows greater than 2250 mm, all lengths in increments of 150 mm

TECHNICAL DATA

Height x width	35 x 90 mm
Luminous flux of luminaire	1980-3330 lm
Colour temperature	3000 K, 4000 K
Colour Rendering Index [CRI]	Ra ≥ 80
Colour consistency	SDCM 3
Maintained luminous flux	L80 50'000 h
Protection class	I
Ingress Protection	IP20

SPECIFICATIONS

Direct lighting (version available with omni-directional lighting, incl. illumination of the ceiling – Purelite)

Available as a channel lighting system, recessed ceiling luminaire, ceiling and wall mounted luminaire or for pendant luminaire

Support profile made of anodised aluminium, natural finish

Opal diffuser made of high-grade plastic

Dimmable digital DALI

LED batten luminaire replaceable on site

Luminaire efficiency up to 141 lm/W

A shadow-free line of light with timeless design

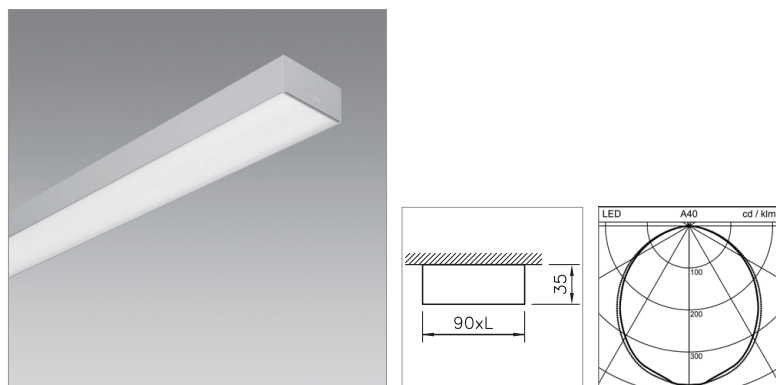
APPLICATION AREAS

Office & Education: open-plan offices, individual offices, classrooms, meeting rooms, foyers and lobbies, circulation zones

Retail & Hospitality: circulation zones

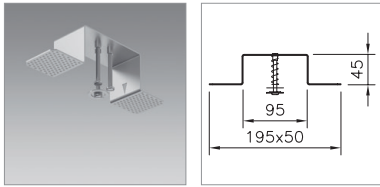


IP20 650°C 230V



CEILING AND WALL MOUNTED LUMINAIRE PURELITE D

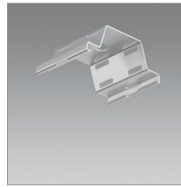
Lenght	System power	Luminous flux of luminaire	Colour temperature	Ref. n°
758 mm	15 W	1880 lm	4000 K	2005.2588
758 mm	15 W	1790 lm	3000 K	2005.2587
1208 mm	14 W	1780 lm	4000 K	2005.2556
1208 mm	14 W	1690 lm	3000 K	2005.2554
1208 mm	22 W	3000 lm	4000 K	2005.2591
1208 mm	22 W	2850 lm	3000 K	2005.2590
1508 mm	17 W	2230 lm	4000 K	2005.2557
1508 mm	17 W	2120 lm	3000 K	2005.2555
1508 mm	27 W	3750 lm	4000 K	2005.2593
1508 mm	27 W	3560 lm	3000 K	2005.2592
2108 mm	23 W	3120 lm	4000 K	2005.2567
2108 mm	23 W	2960 lm	3000 K	2005.2566
2108 mm	37 W	5250 lm	4000 K	2005.2595
2108 mm	37 W	4990 lm	3000 K	2005.2594



MOUNTING SET PURELITE

for the mounting of support profiles without trim, for 1 – 30 mm false ceilings, Recommended: all 1.5 m

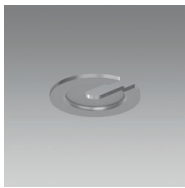
Notes	Bestell-Nummer
	1022.7191



MOUNTING SPRING PURELITE

made of spring steel, to facilitate mounting the support profile on the ceiling, to compensate for uneven surfaces, as a placeholder for cable routing, Recommended: all 1.5 m

Notes	Bestell-Nummer
	1022.7195



SPLINT WASHER SET PURELITE

for mounting of the support profile, Recommended: all 1.5 m

Notes	Bestell-Nummer
promatised, 2 pieces	2004.0587
promatised, 5 pieces	2004.0588



SUSPENSION SET PURELITE

Length 1500 mm, with wire suspension and self-lock, load max. 20 kg, mounting recommendation: every 1.5 m

Notes	Bestell-Nummer
2 wire cords, can be clipped into place, with 2 m power feed cable, transparent, with cable clamp	2005.9888
1 wire cord, can be clipped into place, adjustable	2004.0193



DISMANTLING TOOL PURELITE

Tool for removing the batten from the support profile

Notes	Bestell-Nummer
	1022.8951